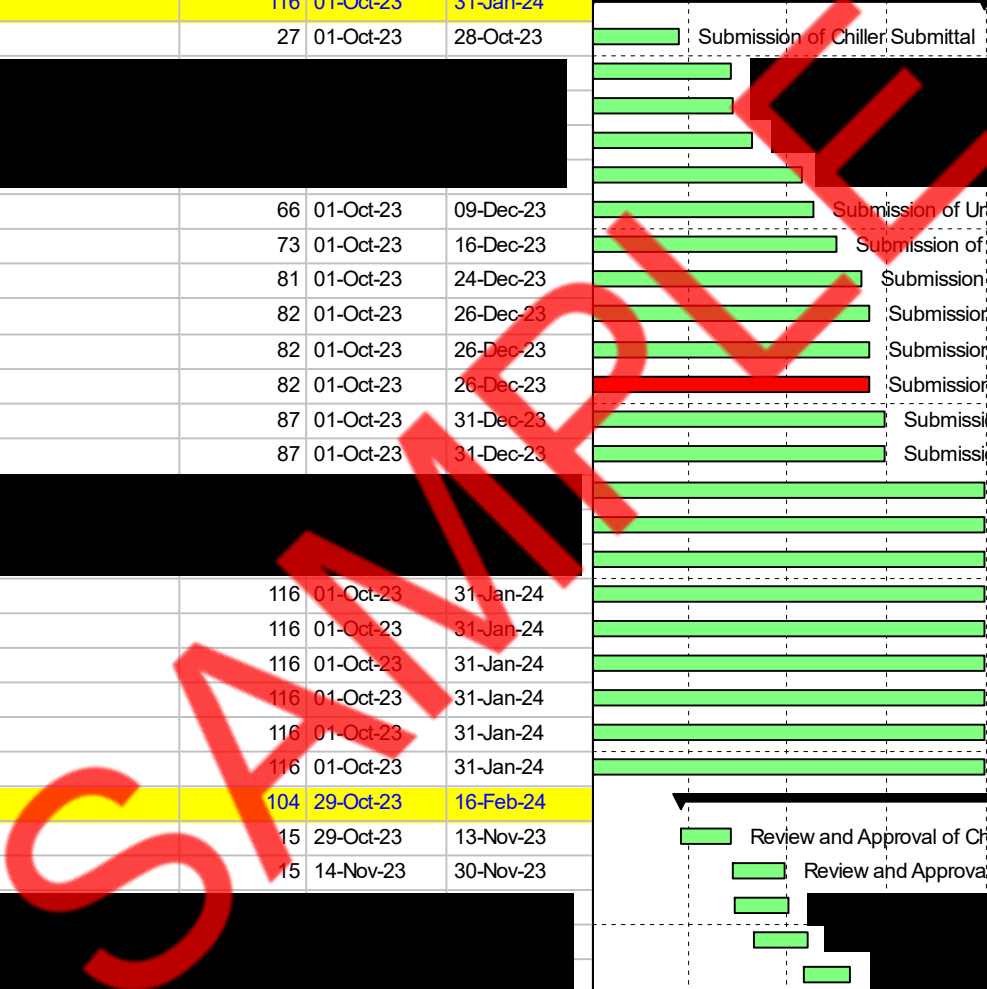


Lynn Sisson Elementary School HVAC Replacement Baseline Schedule Rev 0.0



Activity ID	Activity Name	Original Duration	Start	Finish	Qtr 4, 2023			Qtr 1, 2024			Qtr 2, 2024			Qtr 3, 2024			Qtr 4, 2024				
					Oct	Nov	Dec	Jan	Feb	Mar	Apr	May	Jun	Jul	Aug	Sep	Oct				
LYN SISSION ELEMETRY SCHOOL HVAC REPLACEMENT BASELINE SCHEDULE					251	01-Oct-23	01-Oct-24														01-Oct-24
MILESTONES					355	01-Oct-23	01-Oct-24														01-Oct-24
MS-0010	Notice To Proceed (NTP)	0	01-Oct-23*		Notice To Proceed (NTP)																
MS-0040	Prep for RTUs, structural and Roofing	0		11-Mar-24	◆ Prep for RTUs, structural and Roofing																
MS-0030	Engineering & Procurement Phase (Except Chillers)	0		15-Apr-24	◆ Engineering & Procurement Phase (Except Chillers)																
MS-0050	Existing System Demo/New Equipment Installation	0		16-Sep-24														◆ Existing System			
MS-0020	Project Final Completion Date	0		01-Oct-24*														◆ Project F			
ENGINEERING					131	01-Oct-23	16-Feb-24	16-Feb-24, ENGINEERING													
SUBMISSION					116	01-Oct-23	31-Jan-24	31-Jan-24, SUBMISSION													
SUB-0130	Submission of Chiller Submittal	27	01-Oct-23	28-Oct-23	Submission of Chiller Submittal																
[REDACTED]					[REDACTED]																
SUB-0110	Submission of Unit Ventilators Submittal	66	01-Oct-23	09-Dec-23	Submission of Unit Ventilators Submittal																
SUB-0010	Submission of VFD Submittal	73	01-Oct-23	16-Dec-23	Submission of VFD Submittal																
SUB-0080	Submission of Fans Submittal	81	01-Oct-23	24-Dec-23	Submission of Fans Submittal																
SUB-0050	Submission of CUH-1 Submittal	82	01-Oct-23	26-Dec-23	Submission of CUH-1 Submittal																
SUB-0060	Submission of Hydronic Pumps, Submittal	82	01-Oct-23	26-Dec-23	Submission of Hydronic Pumps, Submittal																
SUB-0070	Submission of Boilers Submittal	82	01-Oct-23	26-Dec-23	Submission of Boilers Submittal																
SUB-0030	Submission of HVAC Insulation Submittal	87	01-Oct-23	31-Dec-23	Submission of HVAC Insulation Submittal																
SUB-0040	Submission of Fin Tube Radiation Submittal	87	01-Oct-23	31-Dec-23	Submission of Fin Tube Radiation Submittal																
[REDACTED]					[REDACTED]																
SUB-0170	Submission of Door Access Control Submittal	116	01-Oct-23	31-Jan-24	Submission of Door Access Control Submittal																
SUB-0180	Submission of Fire Alarms Submittal	116	01-Oct-23	31-Jan-24	Submission of Fire Alarms Submittal																
SUB-0190	Submission of Breakers Submittal	116	01-Oct-23	31-Jan-24	Submission of Breakers Submittal																
SUB-0200	Submission of Cabling Submittal	116	01-Oct-23	31-Jan-24	Submission of Cabling Submittal																
SUB-0210	Submission of Gear Submittal	116	01-Oct-23	31-Jan-24	Submission of Gear Submittal																
SUB-0220	Submission of Raceways Submittal	116	01-Oct-23	31-Jan-24	Submission of Raceways Submittal																
REVIEW AND APPROVAL					104	29-Oct-23	16-Feb-24	16-Feb-24, REVIEW AND APPROVAL													
RA-340	Review and Approval of Chiller Submittal	15	29-Oct-23	13-Nov-23	Review and Approval of Chiller Submittal																
RA-330	Review and Approval of RTU's Submittal	15	14-Nov-23	30-Nov-23	Review and Approval of RTU's Submittal																
[REDACTED]					[REDACTED]																
RA-220	Review and Approval of VFD Submittal	15	17-Dec-23	02-Jan-24	Review and Approval of VFD Submittal																
RA-290	Review and Approval of Fans Submittal	15	26-Dec-23	10-Jan-24	Review and Approval of Fans Submittal																
RA-260	Review and Approval of CUH-1 Submittal	15	27-Dec-23	11-Jan-24	Review and Approval of CUH-1 Submittal																
RA-270	Review and Approval of Hydronic Pumps, Submittal	15	27-Dec-23	11-Jan-24	Review and Approval of Hydronic Pumps, Submittal																
RA-280	Review and Approval of Boilers Submittal	15	27-Dec-23	11-Jan-24	Review and Approval of Boilers Submittal																
RA-240	Review and Approval of HVAC Insulation Submittal	15	02-Jan-24	17-Jan-24	Review and Approval of HVAC Insulation Submittal																
RA-250	Review and Approval of Fin Tube Radiation Submittal	15	02-Jan-24	17-Jan-24	Review and Approval of Fin Tube Radiation Submittal																
RA-350	Review and Approval of Sleeves Submittal	15	01-Feb-24	16-Feb-24	Review and Approval of Sleeves Submittal																
RA-360	Review and Approval of Access Panels Submittal	15	01-Feb-24	16-Feb-24	Review and Approval of Access Panels Submittal																



█ Actual Work
 █ Critical Remaining Work
 Summary
█ Remaining Work
 ◆ Milestone



Activity ID	Activity Name	Original Duration	Start	Finish	Qtr 4, 2023			Qtr 1, 2024			Qtr 2, 2024			Qtr 3, 2024			Qtr 4, 2024
					Oct	Nov	Dec	Jan	Feb	Mar	Apr	May	Jun	Jul	Aug	Sep	Oct
RA-370	Review and Approval of Firestopping Submittal	15	01-Feb-24	16-Feb-24					█								
RA-380	Review and Approval of Door Access Control Submittal	15	01-Feb-24	16-Feb-24					█								
RA-390	Review and Approval of Fire Alarms Submittal	15	01-Feb-24	16-Feb-24					█								
RA-400	Review and Approval of Breakers Submittal	15	01-Feb-24	16-Feb-24					█								
PROCUREMENT					210	14-Nov-23	19-Jun-24										
PROC-0080	Fabricate and Deliver Elevator Penthouse	30	08-Dec-23	08-Jan-24				█									
PROC-0090	Fabricate and Deliver RTU Curbs	60	02-Dec-23	02-Feb-24				█									
PROC-0060	Fabricate and Deliver Boilers	30	12-Jan-24	11-Feb-24					█								
PROC-0070	Fabricate and Deliver Fans	42	11-Jan-24	24-Feb-24					█								
PROC-0040	Fabricate and Deliver CUH	42	12-Jan-24	25-Feb-24					█								
PROC-0050	Fabricate and Deliver Hydronic Pumps tanks	85	12-Jan-24	09-Apr-24						█							
PROC-0110	Fabricate and Deliver Unit Ventilator	105	26-Dec-23	13-Apr-24						█							
PROC-0120	Fabricate and Deliver RTUs	130	01-Dec-23	14-Apr-24						█							
PROC-0020	Fabricate and Deliver VFD's	100	03-Jan-24	15-Apr-24						█							
PROC-0130	Fabricate and Deliver Chillers	210	14-Nov-23	19-Jun-24							█						
CONSTRUCTION					152	13-Feb-24	16-Sep-24										
EARLY SITE WORKS					2	13-Feb-24	14-Feb-24										
ESW-0010	Mobilization	1	13-Feb-24	13-Feb-24													
ESW-0020	Install Safety Measures and Temp. Partitions	1	14-Feb-24	14-Feb-24													
BASEMENT FLOOR					42	12-Mar-24	09-May-24										
DEMOLITIONS					27	12-Mar-24	18-Apr-24										
MECHANICAL DEMOLITION					27	12-Mar-24	18-Apr-24										
C.D.ME.BF	Remove Existing Ductwork, Insulation, Dampers and Controls	3	12-Mar-24	14-Mar-24													
C.D.ME.BF	Remove Unit Heater, Piping and Hangers	2	15-Mar-24	18-Mar-24													
C.D.ME.BF	Remove Unit Ventilator and UV Shelving and Convector	3	02-Apr-24	04-Apr-24													
C.D.ME.BF	Remove Electric Radiator	2	05-Apr-24	08-Apr-24													
C.D.ME.BF	Remove Existing Dual Temp. Hot/Chilled Water Piping	8	09-Apr-24	18-Apr-24													
EXECUTION					18	16-Apr-24	09-May-24										
MECHANICAL WORK					15	19-Apr-24	09-May-24										
C.E.ME.BF	Clean Existing Ductwork	1	19-Apr-24	19-Apr-24													
C.E.ME.BF	Install Boilers & Unit	3	22-Apr-24	24-Apr-24													
C.E.ME.BF	Install Ductwork	5	25-Apr-24	01-May-24													
C.E.ME.BF	Install Piping	5	25-Apr-24	01-May-24													
C.E.ME.BF	Pressure Test For Piping and Duct work	1	02-May-24	02-May-24													
C.E.ME.BF	Insulate Piping and Duct work	3	03-May-24	07-May-24													
C.E.ME.BF	Balancing	1	08-May-24	08-May-24													
C.E.ME.BF	Start-Up	1	09-May-24	09-May-24													
ELECTRICAL WORK					13	16-Apr-24	02-May-24										



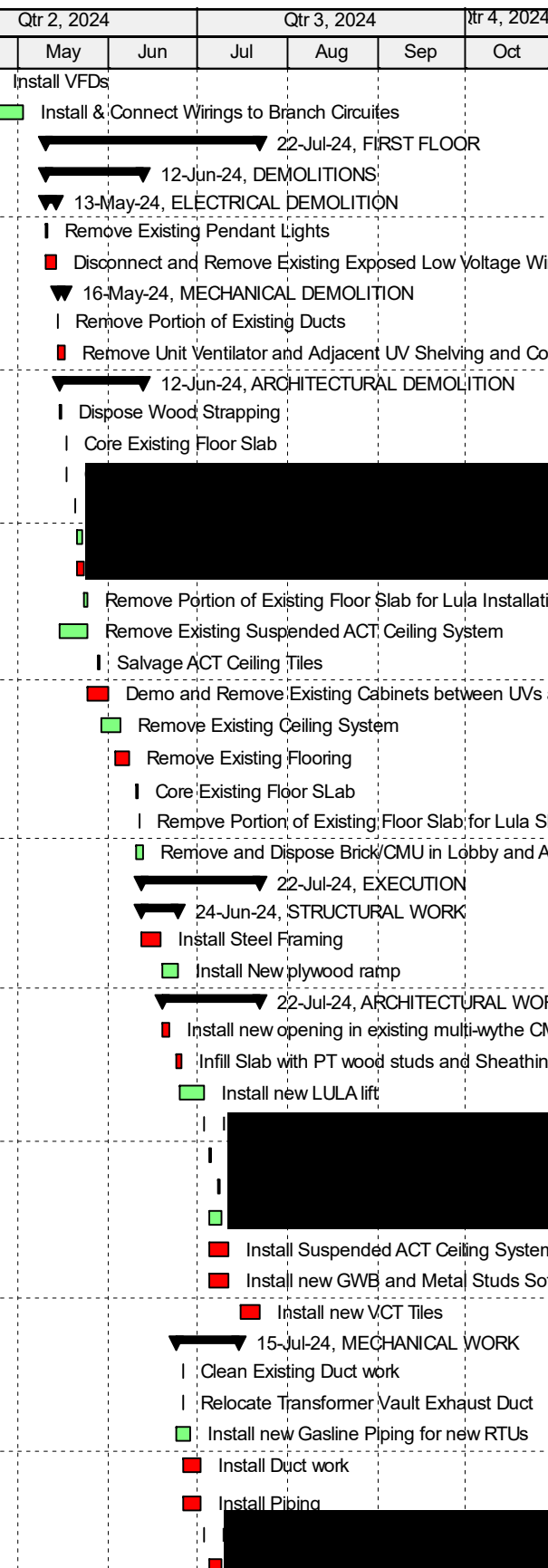
█ Actual Work
 █ Critical Remaining Work
 ▼ Summary
█ Remaining Work
 ◆ Milestone

Lynn Sisson Elementary School HVAC Replacement Baseline Schedule Rev 0.0



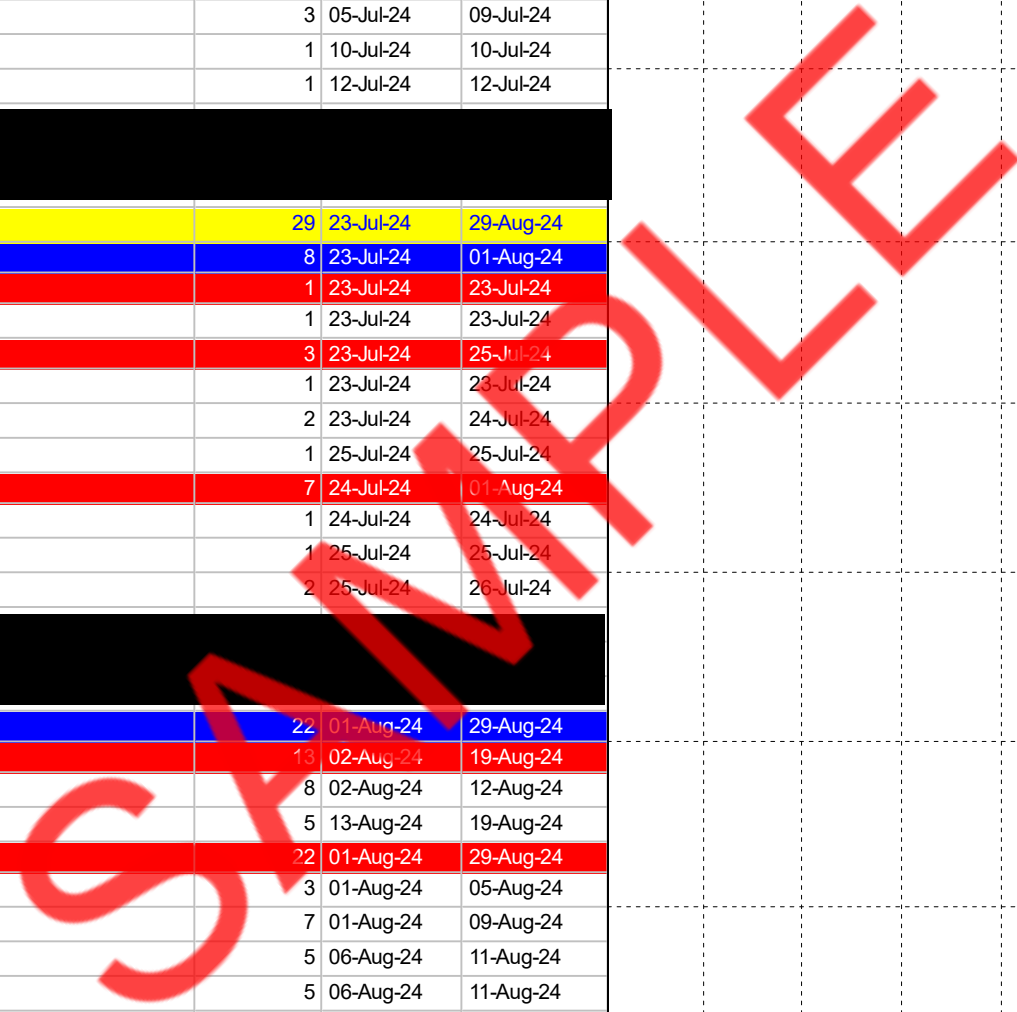
Activity ID	Activity Name	Original Duration	Start	Finish	Qtr 4, 2023			Qtr 1, 2024			Qtr 2, 2024			Qtr 3, 2024			Qtr 4, 2024
					Oct	Nov	Dec	Jan	Feb	Mar	Apr	May	Jun	Jul	Aug	Sep	Oct
C.E.EL.BF-	Install VFDs	5	16-Apr-24	22-Apr-24								█					
C.E.EL.BF-	Install & Connect Wirings to Branch Circuits	10	19-Apr-24	02-May-24								█					
FIRST FLOOR					50	10-May-24	22-Jul-24										
DEMOLITIONS					23	10-May-24	12-Jun-24										
ELECTRICAL DEMOLITION					2	10-May-24	13-May-24										
C.D.EL.1F-	Remove Existing Pendant Lights	1	10-May-24	10-May-24													
C.D.EL.1F-	Disconnect and Remove Existing Exposed Low Voltage Wires	2	10-May-24	13-May-24													
MECHANICAL DEMOLITION					3	14-May-24	16-May-24										
C.D.ME.1F-	Remove Portion of Existing Ducts	1	14-May-24	14-May-24													
C.D.ME.1F-	Remove Unit Ventilator and Adjacent UV Shelving and Convector	3	14-May-24	16-May-24													
ARCHITECTURAL DEMOLITION					20	15-May-24	12-Jun-24										
C.D.AR.1F-	Dispose Wood Strapping	1	15-May-24	15-May-24													
C.D.AR.1F-	Core Existing Floor Slab	1	17-May-24	17-May-24													
[REDACTED]																	
C.D.AR.1F-	Remove Portion of Existing Floor Slab for Lula Installation	2	23-May-24	24-May-24													
C.D.AR.1F-	Remove Existing Suspended ACT Ceiling System	8	15-May-24	24-May-24													
C.D.AR.1F-	Salvage ACT Ceiling Tiles	1	28-May-24	28-May-24													
C.D.AR.1F-	Demo and Remove Existing Cabinets between UVs and Heating Elements	5	24-May-24	31-May-24													
C.D.AR.1F-	Remove Existing Ceiling System	5	29-May-24	04-Jun-24													
C.D.AR.1F-	Remove Existing Flooring	5	03-Jun-24	07-Jun-24													
C.D.AR.1F-	Core Existing Floor Slab	1	10-Jun-24	10-Jun-24													
C.D.AR.1F-	Remove Portion of Existing Floor Slab for Lula Shaft	1	11-Jun-24	11-Jun-24													
C.D.AR.1F-	Remove and Dispose Brick/CMU in Lobby and Admin Area	3	10-Jun-24	12-Jun-24													
EXECUTION					28	12-Jun-24	22-Jul-24										
STRUCTURAL WORK					9	12-Jun-24	24-Jun-24										
C.E.ST.1F-	Install Steel Framing	5	12-Jun-24	18-Jun-24													
C.E.ST.1F-	Install New plywood ramp	4	19-Jun-24	24-Jun-24													
ARCHITECTURAL WORK					23	19-Jun-24	22-Jul-24										
C.E.AR.1F-	Install new opening in existing multi-wythe CMU wall, Masonry Walls	3	19-Jun-24	21-Jun-24													
C.E.AR.1F-	Infill Slab with PT wood studs and Sheathing	2	24-Jun-24	25-Jun-24													
C.E.AR.1F-	Install new LULA lift	7	25-Jun-24	03-Jul-24													
[REDACTED]																	
C.E.AR.1F-	Install Suspended ACT Ceiling System and Tiles	5	05-Jul-24	11-Jul-24													
C.E.AR.1F-	Install new GWB and Metal Studs Soffits	5	05-Jul-24	11-Jul-24													
C.E.AR.1F-	Install new VCT Tiles	5	16-Jul-24	22-Jul-24													
MECHANICAL WORK					15	24-Jun-24	15-Jul-24										
C.E.ME.1F-	Clean Existing Duct work	1	26-Jun-24	26-Jun-24													
C.E.ME.1F-	Relocate Transformer Vault Exhaust Duct	1	26-Jun-24	26-Jun-24													
C.E.ME.1F-	Install new Gasline Piping for new RTUs	5	24-Jun-24	28-Jun-24													
C.E.ME.1F-	Install Duct work	5	26-Jun-24	02-Jul-24													
C.E.ME.1F-	Install Piping	5	26-Jun-24	02-Jul-24													
[REDACTED]																	

SAMPLE





Activity ID	Activity Name	Original Duration	Start	Finish	Qtr 4, 2023			Qtr 1, 2024			Qtr 2, 2024			Qtr 3, 2024			Qtr 4, 2024
					Oct	Nov	Dec	Jan	Feb	Mar	Apr	May	Jun	Jul	Aug	Sep	Oct
C.E.ME.1F	Install new domestic water piping from new ADA toilet	3	09-Jul-24	11-Jul-24													█ Install new domestic water piping from
C.E.ME.1F	Install new fin-tube radiation on each side	3	10-Jul-24	12-Jul-24													█ Install new fin-tube radiation on each
C.E.ME.1F	Start Up	1	15-Jul-24	15-Jul-24													Start Up
ELECTRICAL WORK					6	05-Jul-24	12-Jul-24										▼ 12-Jul-24, ELECTRICAL WORK
C.E.EL.1F-	Install Replay Sequencer	1	05-Jul-24	05-Jul-24													Install Replay Sequencer
C.E.EL.1F-	Install Aiphone Activation	1	05-Jul-24	05-Jul-24													Install Aiphone Activation
C.E.EL.1F-	Install all power supplies and Controllers	3	05-Jul-24	09-Jul-24													█ Install all power supplies and Controller
C.E.EL.1F-	Rewire existing SVR Exit	1	10-Jul-24	10-Jul-24													Rewire existing SVR Exit
C.E.EL.1F-	Install new wall mounted ADA Automatic Door Push Button	1	12-Jul-24	12-Jul-24													Install new wall mounted ADA Autom
SECOND FLOOR					29	23-Jul-24	29-Aug-24										▼ 29-Aug-24, SECON
DEMOLITIONS					8	23-Jul-24	01-Aug-24										▼ 01-Aug-24, DEMOLITIONS
ELECTRICAL DEMOLITION					1	23-Jul-24	23-Jul-24										▼ 23-Jul-24, ELECTRICAL DEMOLI
C.D.EL.2F-	Disconnect power and Wiring from Existing Gym and Cafeteria Fans	1	23-Jul-24	23-Jul-24													Disconnect power and Wiring from
MECHANICAL DEMOLITION					3	23-Jul-24	25-Jul-24										▼ 25-Jul-24, MECHANICAL DEMOI
C.D.ME.2F	Remove Existing Mechanical Equipment	1	23-Jul-24	23-Jul-24													Remove Existing Mechanical Equ
C.D.ME.2F	Remove Existing Ductwork, Insulation, dampers and Controls	2	23-Jul-24	24-Jul-24													█ Remove Existing Ductwork, Insula
C.D.ME.2F	Remove Existing Unit Ventilators and adjacent UV shelving and Convectors	1	25-Jul-24	25-Jul-24													Remove Existing Unit Ventilators
ARCHITECTURAL DEMOLITION					7	24-Jul-24	01-Aug-24										▼ 01-Aug-24, ARCHITECTURAL
C.D.AR.2F-	Core Existing Floor Slab	1	24-Jul-24	24-Jul-24													Core Existing Floor Slab
C.D.AR.2F-	Cut new opening in Existing multi-wythe CMU wall	1	25-Jul-24	25-Jul-24													Cut new opening in Existing mult
C.D.AR.2F-	Remove Portion of Existing Floor Slab	2	25-Jul-24	26-Jul-24													█ Remove Portion of Existing Floor
EXECUTION					22	01-Aug-24	29-Aug-24										▼ 29-Aug-24, EXECUT
STRUCTURAL WORK					13	02-Aug-24	19-Aug-24										▼ 19-Aug-24, STRUCTUR
C.E.ST.2F+	Install Structural Framing	8	02-Aug-24	12-Aug-24													█ Install Structural Framing
C.E.ST.2F+	Install Lintels for walls	5	13-Aug-24	19-Aug-24													█ Install Lintels for walls
ARCHITECTURAL WORK					22	01-Aug-24	29-Aug-24										▼ 29-Aug-24, ARCHITI
C.E.AR.2F-	Install new opening in existing multi-wythe CMU/Masonry wall	3	01-Aug-24	05-Aug-24													█ Install new opening in existin
C.E.AR.2F-	Install Shelving Units	7	01-Aug-24	09-Aug-24													█ Install Shelving Units
C.E.AR.2F-	Install new paint	5	06-Aug-24	11-Aug-24													█ Install new paint
C.E.AR.2F-	Install Fire Stop	5	06-Aug-24	11-Aug-24													█ Install Fire Stop
C.E.AR.2F-	Install new VCT Tiles	8	20-Aug-24	29-Aug-24													█ Install new VCT Tiles
MECHANICAL WORK					14	01-Aug-24	19-Aug-24										▼ 19-Aug-24, MECHANIC
C.E.ME.2F	Remove/Tie new Sanitary line for ADA toilets to existing Sanitary line	2	01-Aug-24	02-Aug-24													█ Remove/Tie new Sanitary line
C.E.ME.2F	Clean Existing Ductwork	3	01-Aug-24	05-Aug-24													█ Clean Existing Ductwork
C.E.ME.2F	Install Duct work	5	06-Aug-24	11-Aug-24													█ Install Duct work
C.E.ME.2F	Install new unit ventilator with fin tube	5	06-Aug-24	11-Aug-24													█ Install new unit ventilator w
C.E.ME.2F	Install piping	5	06-Aug-24	11-Aug-24													█ Install piping





Activity ID	Activity Name	Original Duration	Start	Finish	Qtr 4, 2023			Qtr 1, 2024			Qtr 2, 2024			Qtr 3, 2024			Qtr 4, 2024
					Oct	Nov	Dec	Jan	Feb	Mar	Apr	May	Jun	Jul	Aug	Sep	Oct
C.E.ME.2F	Install Fin tube Radiation	5	12-Aug-24	16-Aug-24													■ Install Fin tube Radiation
C.E.ME.2F	Start up	1	19-Aug-24	19-Aug-24													Start up
ELECTRICAL WORK					1	06-Aug-24	06-Aug-24										▼ 06-Aug-24, ELECTRICAL WORK
C.E.EL.2F-	Connect new lught fixture to existing light circuites	1	06-Aug-24	06-Aug-24													Connect new lught fixture to
C.E.EL.2F-	Connect to existing Fire Alarm Loop	1	06-Aug-24	06-Aug-24													Connect to existing Fire Alarm
ROOF					151	14-Feb-24	16-Sep-24										▶ 16-Sep-24, R
DEMOLITIONS					7	14-Feb-24	23-Feb-24										▼ 23-Feb-24, DEMOLITIONS
ASBESTOS ABATEMENT					5	14-Feb-24	21-Feb-24										▼ 21-Feb-24, ASBESTOS ABATEMENT
C.D.AS.RF-	Abate Asbestos from ACM	5	14-Feb-24	21-Feb-24													■ Abate Asbestos from ACM
MECHANICAL DEMOLITION					1	22-Feb-24	22-Feb-24										▼ 22-Feb-24, MECHANICAL DEMOLITION
C.D.ME.RF	Remove Existing Exhaust Fan on Roof	1	22-Feb-24	22-Feb-24													Remove Existing Exhaust Fan on Roof
ARCHITECTURAL DEMOLITION					1	23-Feb-24	23-Feb-24										▼ 23-Feb-24, ARCHITECTURAL DEMOLITION
C.D.AR.RF-	Cut, Patch Existing Roof for Exhaust Fan Curb Replacement	1	23-Feb-24	23-Feb-24													Cut, Patch Existing Roof for Exhaust Fan Curb Replacement
EXECUTION					146	22-Feb-24	16-Sep-24										▶ 16-Sep-24, E
STRUCTURAL WORK					8	22-Feb-24	04-Mar-24										▼ 04-Mar-24, STRUCTURAL WORK
C.E.ST.RF-	Install Roof Curbs	5	26-Feb-24	01-Mar-24													■ Install Roof Curbs
ARCHITECTURAL WORK					11	26-Feb-24	11-Mar-24										▼ 11-Mar-24, ARCHITECTURAL WORK
C.E.AR.RF-	Install Roof Penetrations	2	26-Feb-24	27-Feb-24													■ Install Roof Penetrations
C.E.AR.RF-	Install Fire Stop	5	26-Feb-24	01-Mar-24													■ Install Fire Stop
MECHANICAL WORK					20	20-Aug-24	16-Sep-24										▶ 16-Sep-24, M
C.E.ME.RF	Clean Existing Duct work	1	20-Aug-24	20-Aug-24													Clean Existing Duct wor
C.E.ME.RF	Install Fans	5	21-Aug-24	27-Aug-24													■ Install Fans
C.E.ME.RF	Install RTU	7	21-Aug-24	29-Aug-24													■ Install RTU
C.E.ME.RF	Install Chillers	7	21-Aug-24	29-Aug-24													■ Install Chillers
C.E.ME.RF	Install new roof mounted VRF condensing Unit	5	30-Aug-24	05-Sep-24													■ Install new roof m
C.E.ME.RF	Pressure Test Duct and Piping	1	06-Sep-24	06-Sep-24													Pressure Test Duct
C.E.ME.RF	Insulate Duct and Piping	4	09-Sep-24	12-Sep-24													■ Insulate Duct a
C.E.ME.RF	Balancing	1	13-Sep-24	13-Sep-24													Balancing
C.E.ME.RF	Start Up	1	16-Sep-24	16-Sep-24													Start Up
PROJECT CLOSEOUT					11	17-Sep-24	01-Oct-24										▶ 01-Oct-2
PCO-0010	Punch List	10	17-Sep-24	30-Sep-24													■ Punch Li
PCO-0020	Demobilization	1	01-Oct-24	01-Oct-24													Demobil

SAMPLE