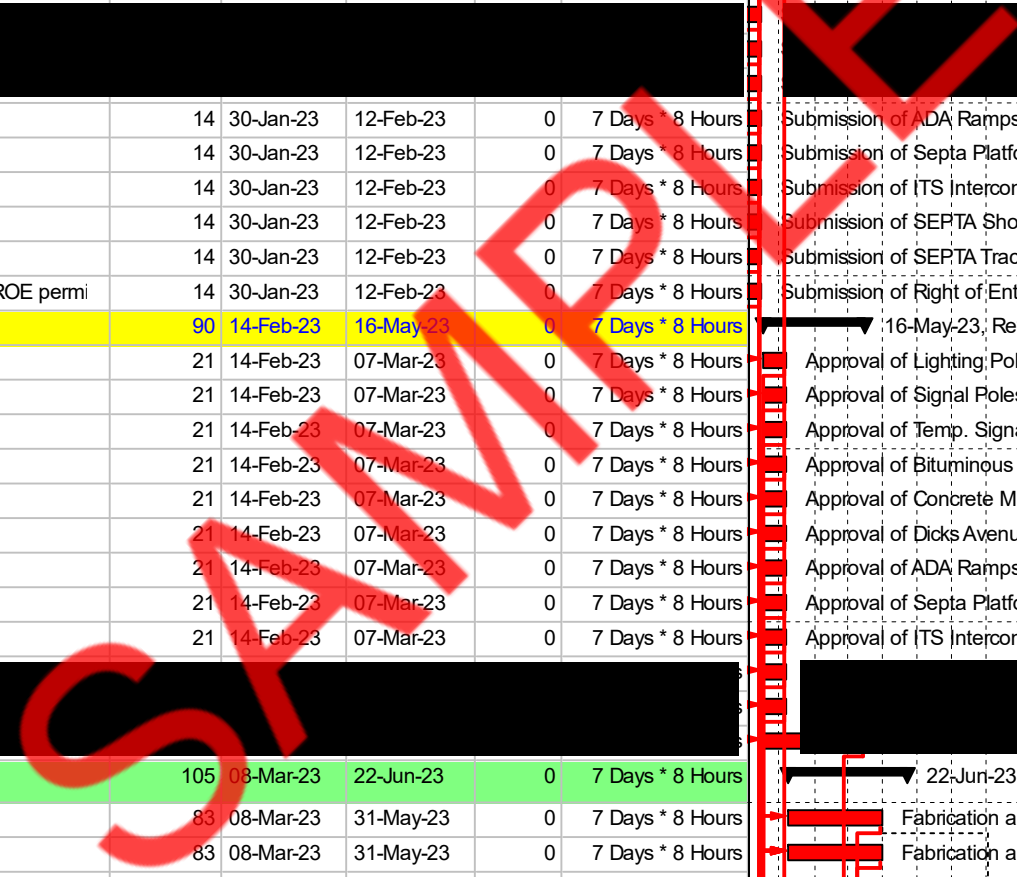


Island Avenue Baseline Schedule



| Activity ID                            | Activity Name   | Original Duration | Start      | Finish     | Total Float | Calendar         | Q   |   |   |   |   |     |   |   |   |   |   |   |   |   |   |   |   |     |   |   |   |   |   |   |   |   |
|--|---|-------------------|------------|------------|-------------|------------------|---|---|---|---|---|-----|---|---|---|---|---|---|---|---|---|---|---|-----|---|---|---|---|---|---|---|---|
|  |   |                   |            |            |             |                  | F   | M | A | M | J | Jul | A | S | O | N | D | J | F | M | A | M | J | Jul | A | S | O | N | D | J | F | M |
| <b>Island Avenue Baseline Schedule</b> |   |                   |            |            |             |                  | 11-Aug-23   |   |   |   |   |     |   |   |   |   |   |   |   |   |   |   |   |     |   |   |   |   |   |   |   |   |
| <b>Milestones</b>                      |   |                   |            |            |             |                  | 11-Aug-23   |   |   |   |   |     |   |   |   |   |   |   |   |   |   |   |   |     |   |   |   |   |   |   |   |   |
| M300                                   | Notice to Proceed   | 0                 | 30-Jan-23* |            | 0           | 7 Days * 8 Hours | Notice to Proceed, 30-Jan-23*   |   |   |   |   |     |   |   |   |   |   |   |   |   |   |   |   |     |   |   |   |   |   |   |   |   |
| M500                                   | Stage 1 Complete  | 0                 |            | 28-May-24  | 0           | 7 Days * 8 Hours | Stage 1 Complete,   |   |   |   |   |     |   |   |   |   |   |   |   |   |   |   |   |     |   |   |   |   |   |   |   |   |
| M600                                   | Stage 2 Complete  | 0                 |            | 07-May-25  | 0           | 7 Days * 8 Hours | Stage 2 Complete,   |   |   |   |   |     |   |   |   |   |   |   |   |   |   |   |   |     |   |   |   |   |   |   |   |   |
| M700                                   | Stage 3 Complete  | 0                 |            | 11-Aug-25  | 0           | 7 Days * 8 Hours | Stage 3   |   |   |   |   |     |   |   |   |   |   |   |   |   |   |   |   |     |   |   |   |   |   |   |   |   |
| M900                                   | Project Completion  | 0                 |            | 11-Aug-25* | 0           | 7 Days * 8 Hours | Project C   |   |   |   |   |     |   |   |   |   |   |   |   |   |   |   |   |     |   |   |   |   |   |   |   |   |
| <b>Engineering</b>                     |   |                   |            |            |             |                  | 16-May-23; Engineering  |   |   |   |   |     |   |   |   |   |   |   |   |   |   |   |   |     |   |   |   |   |   |   |   |   |
| <b>Submission</b>                      |   |                   |            |            |             |                  | 12-Feb-23; Submission   |   |   |   |   |     |   |   |   |   |   |   |   |   |   |   |   |     |   |   |   |   |   |   |   |   |
| E0010                                  | Submission of Lighting Poles Submittal  | 14                | 30-Jan-23  | 12-Feb-23  | 0           | 7 Days * 8 Hours | Submission of Lighting Poles Submittal  |   |   |   |   |     |   |   |   |   |   |   |   |   |   |   |   |     |   |   |   |   |   |   |   |   |
| E0110                                  | Submission of Signal Poles Submittal  | 14                | 30-Jan-23  | 12-Feb-23  | 0           | 7 Days * 8 Hours | Submission of Signal Poles Submittal  |   |   |   |   |     |   |   |   |   |   |   |   |   |   |   |   |     |   |   |   |   |   |   |   |   |
| E0210                                  | Submission of Temp. Signal Design Submittal   | 14                | 30-Jan-23  | 12-Feb-23  | 0           | 7 Days * 8 Hours | Submission of Temp. Signal Design Submittal   |   |   |   |   |     |   |   |   |   |   |   |   |   |   |   |   |     |   |   |   |   |   |   |   |   |
| E0610                                  | Submission of ADA Ramps Submittal   | 14                | 30-Jan-23  | 12-Feb-23  | 0           | 7 Days * 8 Hours | Submission of ADA Ramps Submittal   |   |   |   |   |     |   |   |   |   |   |   |   |   |   |   |   |     |   |   |   |   |   |   |   |   |
| E0710                                  | Submission of Septa Platform Design Submittal   | 14                | 30-Jan-23  | 12-Feb-23  | 0           | 7 Days * 8 Hours | Submission of Septa Platform Design Submittal   |   |   |   |   |     |   |   |   |   |   |   |   |   |   |   |   |     |   |   |   |   |   |   |   |   |
| E0810                                  | Submission of ITS Interconnect Components Power Service Submittal                         | 14                | 30-Jan-23  | 12-Feb-23  | 0           | 7 Days * 8 Hours | Submission of ITS Interconnect Components Power Service Submittal                         |   |   |   |   |     |   |   |   |   |   |   |   |   |   |   |   |     |   |   |   |   |   |   |   |   |
| E0910                                  | Submission of SEPTA Shop Drawings Submittal   | 14                | 30-Jan-23  | 12-Feb-23  | 0           | 7 Days * 8 Hours | Submission of SEPTA Shop Drawings Submittal   |   |   |   |   |     |   |   |   |   |   |   |   |   |   |   |   |     |   |   |   |   |   |   |   |   |
| E1010                                  | Submission of SEPTA Track Outage Submittal  | 14                | 30-Jan-23  | 12-Feb-23  | 0           | 7 Days * 8 Hours | Submission of SEPTA Track Outage Submittal  |   |   |   |   |     |   |   |   |   |   |   |   |   |   |   |   |     |   |   |   |   |   |   |   |   |
| E1110                                  | Submission of Right of Entry and up to four (4) months to receive agreement for ROE permi | 14                | 30-Jan-23  | 12-Feb-23  | 0           | 7 Days * 8 Hours | Submission of Right of Entry and up to four (4) months to receive agreement for ROE permi |   |   |   |   |     |   |   |   |   |   |   |   |   |   |   |   |     |   |   |   |   |   |   |   |   |
| <b>Review &amp; Approval</b>           |   |                   |            |            |             |                  | 16-May-23; Review & Approval  |   |   |   |   |     |   |   |   |   |   |   |   |   |   |   |   |     |   |   |   |   |   |   |   |   |
| E1210                                  | Approval of Lighting Poles Submittal  | 21                | 14-Feb-23  | 07-Mar-23  | 0           | 7 Days * 8 Hours | Approval of Lighting Poles Submittal  |   |   |   |   |     |   |   |   |   |   |   |   |   |   |   |   |     |   |   |   |   |   |   |   |   |
| E1310                                  | Approval of Signal Poles Submittal  | 21                | 14-Feb-23  | 07-Mar-23  | 0           | 7 Days * 8 Hours | Approval of Signal Poles Submittal  |   |   |   |   |     |   |   |   |   |   |   |   |   |   |   |   |     |   |   |   |   |   |   |   |   |
| E1410                                  | Approval of Temp. Signal Design Submittal   | 21                | 14-Feb-23  | 07-Mar-23  | 0           | 7 Days * 8 Hours | Approval of Temp. Signal Design Submittal   |   |   |   |   |     |   |   |   |   |   |   |   |   |   |   |   |     |   |   |   |   |   |   |   |   |
| E1510                                  | Approval of Bituminous Mix Submittal  | 21                | 14-Feb-23  | 07-Mar-23  | 0           | 7 Days * 8 Hours | Approval of Bituminous Mix Submittal  |   |   |   |   |     |   |   |   |   |   |   |   |   |   |   |   |     |   |   |   |   |   |   |   |   |
| E1610                                  | Approval of Concrete Mix Submittal  | 21                | 14-Feb-23  | 07-Mar-23  | 0           | 7 Days * 8 Hours | Approval of Concrete Mix Submittal  |   |   |   |   |     |   |   |   |   |   |   |   |   |   |   |   |     |   |   |   |   |   |   |   |   |
| E1710                                  | Approval of Dicks Avenue Splitter Island Submittal  | 21                | 14-Feb-23  | 07-Mar-23  | 0           | 7 Days * 8 Hours | Approval of Dicks Avenue Splitter Island Submittal  |   |   |   |   |     |   |   |   |   |   |   |   |   |   |   |   |     |   |   |   |   |   |   |   |   |
| E1810                                  | Approval of ADA Ramps Submittal   | 21                | 14-Feb-23  | 07-Mar-23  | 0           | 7 Days * 8 Hours | Approval of ADA Ramps Submittal   |   |   |   |   |     |   |   |   |   |   |   |   |   |   |   |   |     |   |   |   |   |   |   |   |   |
| E1910                                  | Approval of Septa Platform Design Submittal   | 21                | 14-Feb-23  | 07-Mar-23  | 0           | 7 Days * 8 Hours | Approval of Septa Platform Design Submittal   |   |   |   |   |     |   |   |   |   |   |   |   |   |   |   |   |     |   |   |   |   |   |   |   |   |
| E2010                                  | Approval of ITS Interconnect Components Power Service Submittal                           | 21                | 14-Feb-23  | 07-Mar-23  | 0           | 7 Days * 8 Hours | Approval of ITS Interconnect Components Power Service Submittal                           |   |   |   |   |     |   |   |   |   |   |   |   |   |   |   |   |     |   |   |   |   |   |   |   |   |
| <b>Procurement</b>                     |   |                   |            |            |             |                  | 22-Jun-23; Procurement  |   |   |   |   |     |   |   |   |   |   |   |   |   |   |   |   |     |   |   |   |   |   |   |   |   |
| PROC0010                               | Fabrication and Delivery of Lighting Poles  | 83                | 08-Mar-23  | 31-May-23  | 0           | 7 Days * 8 Hours | Fabrication and Delivery of Lighting Poles  |   |   |   |   |     |   |   |   |   |   |   |   |   |   |   |   |     |   |   |   |   |   |   |   |   |
| PROC0110                               | Fabrication and Delivery of Signal Poles  | 83                | 08-Mar-23  | 31-May-23  | 0           | 7 Days * 8 Hours | Fabrication and Delivery of Signal Poles  |   |   |   |   |     |   |   |   |   |   |   |   |   |   |   |   |     |   |   |   |   |   |   |   |   |
| PROC0210                               | Fabrication and Delivery of SEPTA Platforms   | 105               | 08-Mar-23  | 22-Jun-23  | 0           | 7 Days * 8 Hours | Fabrication and Delivery of SEPTA Platforms   |   |   |   |   |     |   |   |   |   |   |   |   |   |   |   |   |     |   |   |   |   |   |   |   |   |
| <b>PreConstruction</b>                 |   |                   |            |            |             |                  | 24-Mar-23; PreConstruction  |   |   |   |   |     |   |   |   |   |   |   |   |   |   |   |   |     |   |   |   |   |   |   |   |   |
| PC 1010                                | Surveying prior to Demolition, Construction   | 15                | 30-Jan-23  | 21-Feb-23  | 0           | 5 Days * 8 Hours | Surveying prior to Demolition, Construction   |   |   |   |   |     |   |   |   |   |   |   |   |   |   |   |   |     |   |   |   |   |   |   |   |   |
| PC 1110                                | Ballast Placement   | 8                 | 22-Feb-23  | 03-Mar-23  | 0           | 5 Days * 8 Hours | Ballast Placement   |   |   |   |   |     |   |   |   |   |   |   |   |   |   |   |   |     |   |   |   |   |   |   |   |   |
| PC 1210                                | Tress Removal   | 8                 | 22-Feb-23  | 03-Mar-23  | 0           | 5 Days * 8 Hours | Tress Removal   |   |   |   |   |     |   |   |   |   |   |   |   |   |   |   |   |     |   |   |   |   |   |   |   |   |
| PC 1310                                | ESC Removal   | 8                 | 22-Feb-23  | 03-Mar-23  | 0           | 5 Days * 8 Hours | ESC Removal   |   |   |   |   |     |   |   |   |   |   |   |   |   |   |   |   |     |   |   |   |   |   |   |   |   |
| <b>SEPTA Co-Ordination</b>             |   |                   |            |            |             |                  | 24-Mar-23; SEPTA Co-Ordination:   |   |   |   |   |     |   |   |   |   |   |   |   |   |   |   |   |     |   |   |   |   |   |   |   |   |
| SC1020                                 | Trolley Catenary Pole Relocations   | 15                | 06-Mar-23  | 24-Mar-23  | 0           | 5 Days * 8 Hours | Trolley Catenary Pole Relocations   |   |   |   |   |     |   |   |   |   |   |   |   |   |   |   |   |     |   |   |   |   |   |   |   |   |
| SC1030                                 | SEPTA Trolley Platform Construction   | 15                | 06-Mar-23  | 24-Mar-23  | 0           | 5 Days * 8 Hours | SEPTA Trolley Platform Construction   |   |   |   |   |     |   |   |   |   |   |   |   |   |   |   |   |     |   |   |   |   |   |   |   |   |
| SC1040                                 | Proposed Trolley Cross-Over Construction  | 15                | 06-Mar-23  | 24-Mar-23  | 0           | 5 Days * 8 Hours | Proposed Trolley Cross-Over Construction  |   |   |   |   |     |   |   |   |   |   |   |   |   |   |   |   |     |   |   |   |   |   |   |   |   |

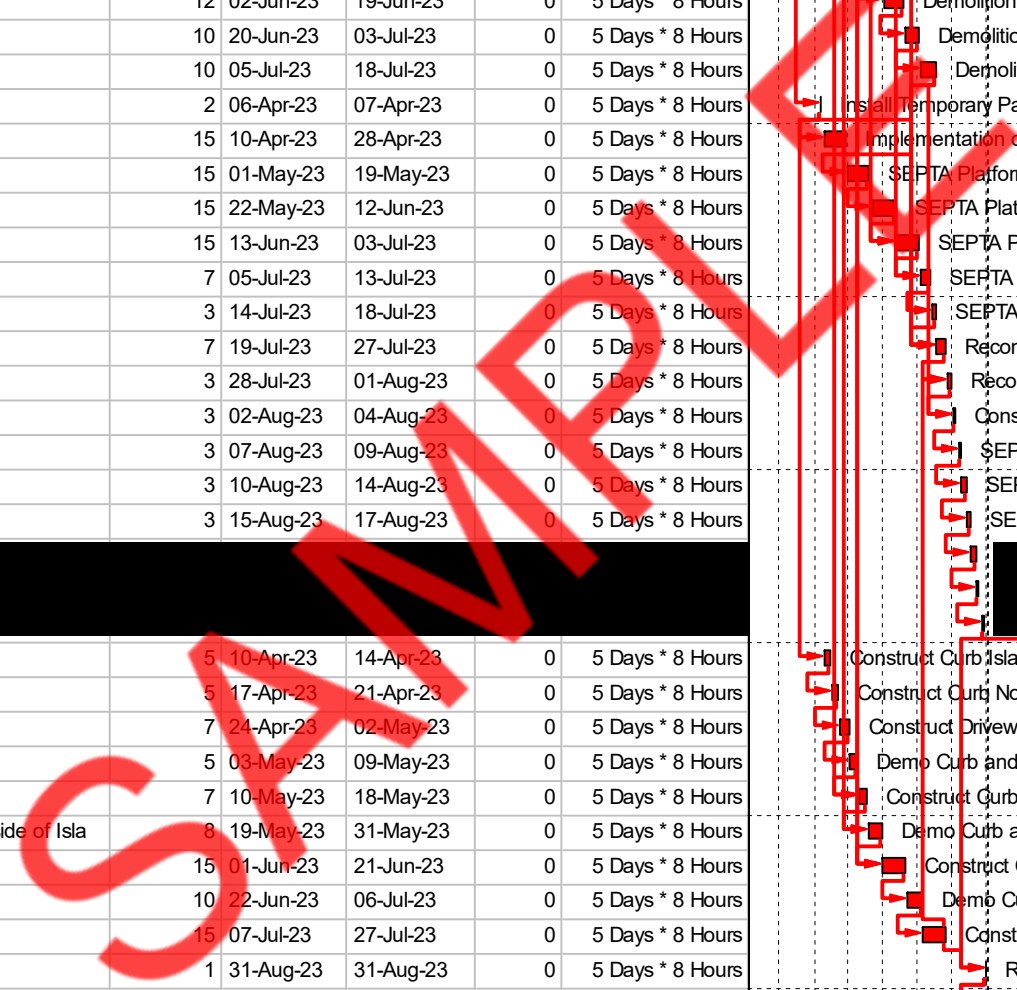


█ Actual Level of Effort   
 █ Remaining Work   
 █ Critical Remaining Work   
 ◆ Milestone   
 ── summary

# Island Avenue Baseline Schedule



| Activity ID                | Activity Name  | Original Duration | Start     | Finish    | Total Float | Calendar         | Q  |   |   |   |   |     |   |   |   |   |   |   |   |   |   |   |   |     |   |   |   |   |   |   |   |   |   |   |
|----------------------------|--|-------------------|-----------|-----------|-------------|------------------|--|---|---|---|---|-----|---|---|---|---|---|---|---|---|---|---|---|-----|---|---|---|---|---|---|---|---|---|---|
|                            |  |                   |           |           |             |                  | F  | M | A | M | J | Jul | A | S | O | N | D | J | F | M | A | M | J | Jul | A | S | O | N | D | J | F | M | A | M |
| SC1050                     | Existing Trolley Cross-Over Demolition   | 15                | 06-Mar-23 | 24-Mar-23 | 0           | 5 Days * 8 Hours | Existing Trolley Cross-Over Demolition   |   |   |   |   |     |   |   |   |   |   |   |   |   |   |   |   |     |   |   |   |   |   |   |   |   |   |   |
| <b>Construction</b>        |  | 869               | 27-Mar-23 | 11-Aug-25 | 0           |                  | 11-Aug-25  |   |   |   |   |     |   |   |   |   |   |   |   |   |   |   |   |     |   |   |   |   |   |   |   |   |   |   |
| <b>Stage 1</b>             |  | 499               | 27-Mar-23 | 06-Aug-24 | 37          |                  | 06-Aug-24, Stage 1   |   |   |   |   |     |   |   |   |   |   |   |   |   |   |   |   |     |   |   |   |   |   |   |   |   |   |   |
| <b>Stage 1A</b>            |  | 141               | 27-Mar-23 | 16-Oct-23 | 53          | 5 Days * 8 Hours | 16-Oct-23, Stage 1A  |   |   |   |   |     |   |   |   |   |   |   |   |   |   |   |   |     |   |   |   |   |   |   |   |   |   |   |
| C1016                      | Demolition of Lindbergh & Island North Platform  | 15                | 20-Apr-23 | 10-May-23 | 0           | 5 Days * 8 Hours | Demolition of Lindbergh & Island North Platform  |   |   |   |   |     |   |   |   |   |   |   |   |   |   |   |   |     |   |   |   |   |   |   |   |   |   |   |
| C1017                      | Demolition of 76th St & Island South Platform  | 15                | 11-May-23 | 01-Jun-23 | 0           | 5 Days * 8 Hours | Demolition of 76th St & Island South Platform  |   |   |   |   |     |   |   |   |   |   |   |   |   |   |   |   |     |   |   |   |   |   |   |   |   |   |   |
| C1018                      | Demolition of 76th St & Island North Platform  | 12                | 02-Jun-23 | 19-Jun-23 | 0           | 5 Days * 8 Hours | Demolition of 76th St & Island North Platform  |   |   |   |   |     |   |   |   |   |   |   |   |   |   |   |   |     |   |   |   |   |   |   |   |   |   |   |
| C1019                      | Demolition of Tanager & Island South Platform  | 10                | 20-Jun-23 | 03-Jul-23 | 0           | 5 Days * 8 Hours | Demolition of Tanager & Island South Platform  |   |   |   |   |     |   |   |   |   |   |   |   |   |   |   |   |     |   |   |   |   |   |   |   |   |   |   |
| C1020                      | Demolition of Tanager & Island North Platform  | 10                | 05-Jul-23 | 18-Jul-23 | 0           | 5 Days * 8 Hours | Demolition of Tanager & Island North Platform  |   |   |   |   |     |   |   |   |   |   |   |   |   |   |   |   |     |   |   |   |   |   |   |   |   |   |   |
| C1021                      | Install Temporary Pavement   | 2                 | 06-Apr-23 | 07-Apr-23 | 0           | 5 Days * 8 Hours | Install Temporary Pavement   |   |   |   |   |     |   |   |   |   |   |   |   |   |   |   |   |     |   |   |   |   |   |   |   |   |   |   |
| C1022                      | Implementation of Grade Crossing   | 15                | 10-Apr-23 | 28-Apr-23 | 0           | 5 Days * 8 Hours | Implementation of Grade Crossing   |   |   |   |   |     |   |   |   |   |   |   |   |   |   |   |   |     |   |   |   |   |   |   |   |   |   |   |
| C1031                      | SEPTA Platforms Form work/Rebar for Platform   | 15                | 01-May-23 | 19-May-23 | 0           | 5 Days * 8 Hours | SEPTA Platforms Form work/Rebar for Platform   |   |   |   |   |     |   |   |   |   |   |   |   |   |   |   |   |     |   |   |   |   |   |   |   |   |   |   |
| C1032                      | SEPTA Platforms Pour Platform Concrete   | 15                | 22-May-23 | 12-Jun-23 | 0           | 5 Days * 8 Hours | SEPTA Platforms Pour Platform Concrete   |   |   |   |   |     |   |   |   |   |   |   |   |   |   |   |   |     |   |   |   |   |   |   |   |   |   |   |
| C1033                      | SEPTA Platforms Strip Forms  | 15                | 13-Jun-23 | 03-Jul-23 | 0           | 5 Days * 8 Hours | SEPTA Platforms Strip Forms  |   |   |   |   |     |   |   |   |   |   |   |   |   |   |   |   |     |   |   |   |   |   |   |   |   |   |   |
| C1034                      | SEPTA Platforms Install Permanent Barrier  | 7                 | 05-Jul-23 | 13-Jul-23 | 0           | 5 Days * 8 Hours | SEPTA Platforms Install Permanent Barrier  |   |   |   |   |     |   |   |   |   |   |   |   |   |   |   |   |     |   |   |   |   |   |   |   |   |   |   |
| C1035                      | SEPTA Platforms Pour Curb  | 3                 | 14-Jul-23 | 18-Jul-23 | 0           | 5 Days * 8 Hours | SEPTA Platforms Pour Curb  |   |   |   |   |     |   |   |   |   |   |   |   |   |   |   |   |     |   |   |   |   |   |   |   |   |   |   |
| C1040                      | Reconstruct Lindbergh Trolley Stops work   | 7                 | 19-Jul-23 | 27-Jul-23 | 0           | 5 Days * 8 Hours | Reconstruct Lindbergh Trolley Stops work   |   |   |   |   |     |   |   |   |   |   |   |   |   |   |   |   |     |   |   |   |   |   |   |   |   |   |   |
| C1042                      | Reconstruct Lindbergh Curb-coord work  | 3                 | 28-Jul-23 | 01-Aug-23 | 0           | 5 Days * 8 Hours | Reconstruct Lindbergh Curb-coord work  |   |   |   |   |     |   |   |   |   |   |   |   |   |   |   |   |     |   |   |   |   |   |   |   |   |   |   |
| C1050                      | Construct SB Tanager Trolley Stops work  | 3                 | 02-Aug-23 | 04-Aug-23 | 0           | 5 Days * 8 Hours | Construct SB Tanager Trolley Stops work  |   |   |   |   |     |   |   |   |   |   |   |   |   |   |   |   |     |   |   |   |   |   |   |   |   |   |   |
| C1053                      | SEPTA SB Tanager Platforms Form work/Rebar for Platform                                      | 3                 | 07-Aug-23 | 09-Aug-23 | 0           | 5 Days * 8 Hours | SEPTA SB Tanager Platforms Form work/Rebar for Platform                                      |   |   |   |   |     |   |   |   |   |   |   |   |   |   |   |   |     |   |   |   |   |   |   |   |   |   |   |
| C1054                      | SEPTA SB Tanager Platforms Pour Platform Concrete  | 3                 | 10-Aug-23 | 14-Aug-23 | 0           | 5 Days * 8 Hours | SEPTA SB Tanager Platforms Pour Platform Concrete  |   |   |   |   |     |   |   |   |   |   |   |   |   |   |   |   |     |   |   |   |   |   |   |   |   |   |   |
| C1055                      | SEPTA SB Tanager Platforms Strip Forms   | 3                 | 15-Aug-23 | 17-Aug-23 | 0           | 5 Days * 8 Hours | SEPTA SB Tanager Platforms Strip Forms   |   |   |   |   |     |   |   |   |   |   |   |   |   |   |   |   |     |   |   |   |   |   |   |   |   |   |   |
| C1060                      | Construct Curb Island Ave SB Frontage Rd (Sta104+49-111+14)                                  | 5                 | 10-Apr-23 | 14-Apr-23 | 0           | 5 Days * 8 Hours | Construct Curb Island Ave SB Frontage Rd (Sta104+49-111+14)                                  |   |   |   |   |     |   |   |   |   |   |   |   |   |   |   |   |     |   |   |   |   |   |   |   |   |   |   |
| C1070                      | Construct Curb North Side of Lindbergh (Sta336+90-341+29)                                    | 5                 | 17-Apr-23 | 21-Apr-23 | 0           | 5 Days * 8 Hours | Construct Curb North Side of Lindbergh (Sta336+90-341+29)                                    |   |   |   |   |     |   |   |   |   |   |   |   |   |   |   |   |     |   |   |   |   |   |   |   |   |   |   |
| C1080                      | Construct Driveway Access Points North Side of Lindbergh (Sta 402+11-407+13)                 | 7                 | 24-Apr-23 | 02-May-23 | 0           | 5 Days * 8 Hours | Construct Driveway Access Points North Side of Lindbergh (Sta 402+11-407+13)                 |   |   |   |   |     |   |   |   |   |   |   |   |   |   |   |   |     |   |   |   |   |   |   |   |   |   |   |
| C1090                      | Demo Curb and Sidewalk NW Corner of Frontage and Chelwynde Intersection                      | 5                 | 03-May-23 | 09-May-23 | 0           | 5 Days * 8 Hours | Demo Curb and Sidewalk NW Corner of Frontage and Chelwynde Intersection                      |   |   |   |   |     |   |   |   |   |   |   |   |   |   |   |   |     |   |   |   |   |   |   |   |   |   |   |
| C1100                      | Construct Curb and Sidewalk NW Corner of Frontage and Chelwynde Intersection                 | 7                 | 10-May-23 | 18-May-23 | 0           | 5 Days * 8 Hours | Construct Curb and Sidewalk NW Corner of Frontage and Chelwynde Intersection                 |   |   |   |   |     |   |   |   |   |   |   |   |   |   |   |   |     |   |   |   |   |   |   |   |   |   |   |
| C1110                      | Demo Curb and sidewalk SW Corner of Island, Buist and 74th Intersection, West side of Island | 8                 | 19-May-23 | 31-May-23 | 0           | 5 Days * 8 Hours | Demo Curb and sidewalk SW Corner of Island, Buist and 74th Intersection, West side of Island |   |   |   |   |     |   |   |   |   |   |   |   |   |   |   |   |     |   |   |   |   |   |   |   |   |   |   |
| C1120                      | Construct Curb and Sidewalk SW Corner of Island, Buist and 74th                              | 15                | 01-Jun-23 | 21-Jun-23 | 0           | 5 Days * 8 Hours | Construct Curb and Sidewalk SW Corner of Island, Buist and 74th                              |   |   |   |   |     |   |   |   |   |   |   |   |   |   |   |   |     |   |   |   |   |   |   |   |   |   |   |
| C1130                      | Demo Curb and Sidewalk NW and NE Corner of Island, Buist and                                 | 10                | 22-Jun-23 | 06-Jul-23 | 0           | 5 Days * 8 Hours | Demo Curb and Sidewalk NW and NE Corner of Island, Buist and                                 |   |   |   |   |     |   |   |   |   |   |   |   |   |   |   |   |     |   |   |   |   |   |   |   |   |   |   |
| C1140                      | Construct Curb and Sidewalk NW and NE Corner of Island, Buist and                            | 15                | 07-Jul-23 | 27-Jul-23 | 0           | 5 Days * 8 Hours | Construct Curb and Sidewalk NW and NE Corner of Island, Buist and                            |   |   |   |   |     |   |   |   |   |   |   |   |   |   |   |   |     |   |   |   |   |   |   |   |   |   |   |
| C1150                      | Rmve MPT, Open WB Right Lane on Lindbergh from East of Island to                             | 1                 | 31-Aug-23 | 31-Aug-23 | 0           | 5 Days * 8 Hours | Rmve MPT, Open WB Right Lane on Lindbergh from East of Island to                             |   |   |   |   |     |   |   |   |   |   |   |   |   |   |   |   |     |   |   |   |   |   |   |   |   |   |   |
| C1950                      | Installation of Railroad Preemption and Actuation Devices                                    | 15                | 01-Sep-23 | 22-Sep-23 | 28          | 5 Days * 8 Hours | Installation of Railroad Preemption and Actuation Devices                                    |   |   |   |   |     |   |   |   |   |   |   |   |   |   |   |   |     |   |   |   |   |   |   |   |   |   |   |
| C2050                      | Installation of Lighting Poles   | 15                | 25-Sep-23 | 16-Oct-23 | 53          | 5 Days * 8 Hours | Installation of Lighting Poles   |   |   |   |   |     |   |   |   |   |   |   |   |   |   |   |   |     |   |   |   |   |   |   |   |   |   |   |
| <b>Stage 1B</b>            |  | 341               | 01-Sep-23 | 06-Aug-24 | 37          |                  | 06-Aug-24, Stage 1B  |   |   |   |   |     |   |   |   |   |   |   |   |   |   |   |   |     |   |   |   |   |   |   |   |   |   |   |
| <b>Stage 1B Short Term</b> |  | 83                | 01-Sep-23 | 22-Nov-23 | 6           |                  | 22-Nov-23, Stage 1B Short Term   |   |   |   |   |     |   |   |   |   |   |   |   |   |   |   |   |     |   |   |   |   |   |   |   |   |   |   |
| C1159                      | Implementation of Detour   | 1                 | 01-Sep-23 | 01-Sep-23 | 0           | 5 Days * 8 Hours | Implementation of Detour   |   |   |   |   |     |   |   |   |   |   |   |   |   |   |   |   |     |   |   |   |   |   |   |   |   |   |   |
| C1160                      | Install MPT, Shift Traffic SB Frontage South of Lindbergh                                    | 1                 | 01-Sep-23 | 01-Sep-23 | 0           | 5 Days * 8 Hours | Install MPT, Shift Traffic SB Frontage South of Lindbergh                                    |   |   |   |   |     |   |   |   |   |   |   |   |   |   |   |   |     |   |   |   |   |   |   |   |   |   |   |
| C1170                      | Sawcut and Demo Pavement East of Tracks between Trolly Crossover                             | 3                 | 05-Sep-23 | 07-Sep-23 | 0           | 5 Days * 8 Hours | Sawcut and Demo Pavement East of Tracks between Trolly Crossover                             |   |   |   |   |     |   |   |   |   |   |   |   |   |   |   |   |     |   |   |   |   |   |   |   |   |   |   |
| C1180                      | Removal of Pavement East of Tracks between Trolly Crossover                                  | 5                 | 08-Sep-23 | 14-Sep-23 | 0           | 5 Days * 8 Hours | Removal of Pavement East of Tracks between Trolly Crossover                                  |   |   |   |   |     |   |   |   |   |   |   |   |   |   |   |   |     |   |   |   |   |   |   |   |   |   |   |



■ Actual Level of Effort   
 ■ Remaining Work   
 ◆ ◆ Milestone  
■ Actual Work   
 ■ Critical Remaining Work   
 ── summary





