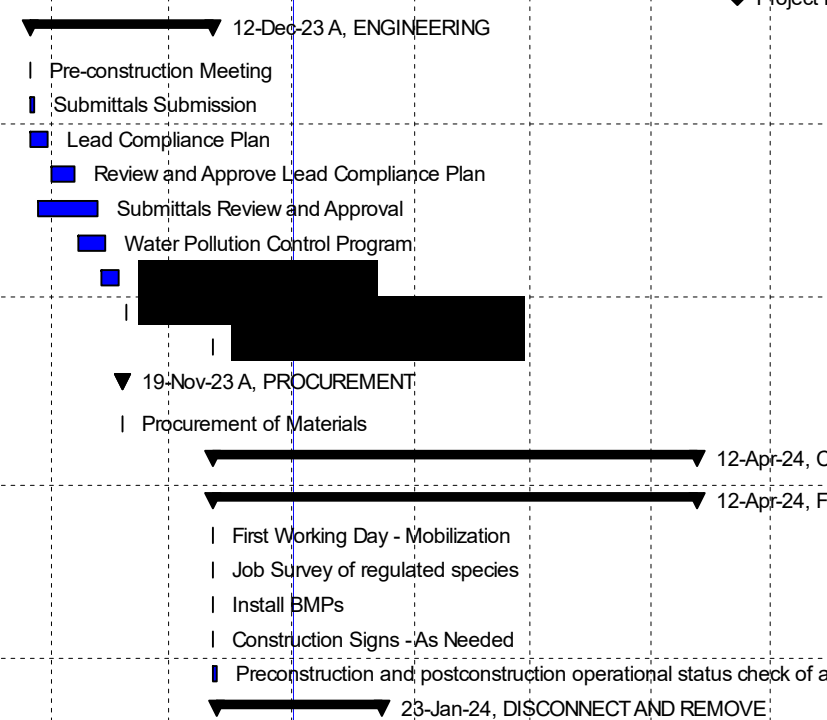




Activity ID	Activity Name	Original Duration	Activity % Complete	Start	Finish	Qtr 3, 2023			Qtr 4, 2023			Qtr 1, 2024			Qtr 2, 2024	
						Jul	Aug	Sep	Oct	Nov	Dec	Jan	Feb	Mar	Apr	May
Caltrans 08-1L7014 December-23 Update Schedule Rev 1.1		201		29-Jun-23 A	22-Apr-24	▼ 22-Apr-24										
MILESTONES		287		29-Jun-23 A	22-Apr-24	▼ 22-Apr-24										
MS-1000	Contract Approval	0	100%	29-Jun-23 A		Contract Approval										
MS-1010						[Redacted]										
MS-1020						[Redacted]										
MS-1030						[Redacted]										
MS-1040						[Redacted]										
MS-1050						[Redacted]										
MS-1060	Jobsite Management and BMPs 4	0	0%	02-Jan-24*		◆ Jobsite Management and BMPs 4										
MS-1070	Jobsite Management and BMPs 5	0	0%	02-Jan-24*		◆ Jobsite Management and BMPs 5										
MS-1080	Jobsite Management and BMPs 6	0	0%	02-Jan-24*		◆ Jobsite Management and BMPs 6										
MS-1090	Jobsite Management and BMPs 7	0	0%	02-Jan-24*		◆ Jobsite Management and BMPs 7										
MS-1100	Jobsite Management and BMPs 8	0	0%	02-Jan-24*		◆ Jobsite Management and BMPs 8										
MS-1110	Jobsite Management and BMPs 9	0	0%	02-Jan-24*		◆ Jobsite Management and BMPs 9										
MS-1120	Jobsite Management and BMPs 10	0	0%	04-Jan-24*		◆ Jobsite Management and BMPs 10										
MS-1130	Jobsite Management and BMPs 11	0	0%	11-Jan-24*		◆ Jobsite Management and BMPs 11										
MS-1140	Jobsite Management and BMPs 12	0	0%	18-Jan-24*		◆ Jobsite Management and BMPs 12										
MS-1150	Jobsite Management and BMPs 13	0	0%	25-Jan-24*		◆ Jobsite Management and BMPs 13										
MS-1160	Jobsite Management and BMPs 14	0	0%	01-Feb-24*		◆ Jobsite Management and BMPs 14										
MS-1170	Jobsite Management and BMPs 15	0	0%	08-Feb-24*		◆ Jobsite Management and BMPs 15										
MS-1180						[Redacted]										
MS-1190						[Redacted]										
MS-1200						[Redacted]										
MS-1220						[Redacted]										
MS-1230						[Redacted]										
MS-1210	Project Substantial Completion Date	0	0%		15-Apr-24	◆ Project Substantial Completion Date										
MS-1240	Project Final Completion Date	0	0%		22-Apr-24*	◆ Project Final Completion Date										
ENGINEERING		13		27-Oct-23 A	12-Dec-23 A	▼ 12-Dec-23 A, ENGINEERING										
ENGR-1000	Pre-construction Meeting	1	100%	27-Oct-23 A	27-Oct-23 A	Pre-construction Meeting										
ENGR-1060	Submittals Submission	2	100%	27-Oct-23 A	28-Oct-23 A	Submittals Submission										
ENGR-1030	Lead Compliance Plan	5	100%	27-Oct-23 A	31-Oct-23 A	Lead Compliance Plan										
ENGR-1040	Review and Approve Lead Compliance Plan	7	100%	01-Nov-23 A	07-Nov-23 A	Review and Approve Lead Compliance Plan										
ENGR-1090	Submittals Review and Approval	15	100%	29-Oct-23 A	13-Nov-23 A	Submittals Review and Approval										
ENGR-1050	Water Pollution Control Program	5	100%	08-Nov-23 A	15-Nov-23 A	Water Pollution Control Program										
ENGR-1100						[Redacted]										
ENGR-1110						[Redacted]										
ENGR-1020						[Redacted]										
PROCUREMENT		1		19-Nov-23 A	19-Nov-23 A	▼ 19-Nov-23 A, PROCUREMENT										
PROC-0010	Procurement of Materials	1	100%	19-Nov-23 A	19-Nov-23 A	Procurement of Materials										
CONSTRUCTION		112		12-Dec-23 A	12-Apr-24	▼ 12-Apr-24, CONSTRUCTION										
FIELD WORK		112		12-Dec-23 A	12-Apr-24	▼ 12-Apr-24, FIELD WORK										
FW-1000	First Working Day - Mobilization	1	100%	12-Dec-23 A	12-Dec-23 A	First Working Day - Mobilization										
FW-1010	Job Survey of regulated species	1	100%	12-Dec-23 A	12-Dec-23 A	Job Survey of regulated species										
FW-1020	Install BMPs	1	100%	12-Dec-23 A	12-Dec-23 A	Install BMPs										
FW-1030	Construction Signs - As Needed	1	100%	12-Dec-23 A	12-Dec-23 A	Construction Signs - As Needed										
FW-1040	Preconstruction and postconstruction operational status check of all elements	1	100%	12-Dec-23 A	13-Dec-23 A	Preconstruction and postconstruction operational status check of all elements										
DISCONNECT AND REMOVE		30		13-Dec-23 A	23-Jan-24	▼ 23-Jan-24, DISCONNECT AND REMOVE										

SAMPLE





Activity ID	Activity Name	Original Duration	Activity % Complete	Start	Finish	Qtr 3, 2023			Qtr 4, 2023			Qtr 1, 2024			Qtr 2, 2024	
						Jul	Aug	Sep	Oct	Nov	Dec	Jan	Feb	Mar	Apr	May
D&R-1290																
D&R-1310																
D&R-1320																
D&R-1330																
D&R-1350																
D&R-1360	Disconnect and Remove Existing Pole, and Wires for Location 37	1	90%	26-Dec-23 A	02-Jan-24											
D&R-1370	Disconnect and Remove Existing Pole, and Wires for Location 38	1	90%	27-Dec-23 A	02-Jan-24											
D&R-1380	Disconnect and Remove Existing Pole, and Wires for Location 39	1	90%	28-Dec-23 A	02-Jan-24											
D&R-1390	Disconnect and Remove Existing Pole, and Wires for Location 40	1	90%	29-Dec-23 A	02-Jan-24											
D&R-1000	Disconnect and Remove Existing Pole, and Wires for Location 1	1	0%	02-Jan-24	02-Jan-24											
D&R-1340	Disconnect and Remove Existing Pole, and Wires for Location 35	1	0%	02-Jan-24	02-Jan-24											
D&R-1400	Disconnect and Remove Existing Pole, and Wires for Location 41	1	0%	02-Jan-24	02-Jan-24											
D&R-1010	Disconnect and Remove Existing Pole, and Wires for Location 2	1	0%	02-Jan-24	02-Jan-24											
D&R-1410	Disconnect and Remove Existing Pole, and Wires for Location 42	1	0%	02-Jan-24	03-Jan-24											
D&R-1020	Disconnect and Remove Existing Pole, and Wires for Location 3	1	0%	03-Jan-24	03-Jan-24											
D&R-1420																
D&R-1030																
D&R-1430																
D&R-1040																
D&R-1440																
D&R-1050	Disconnect and Remove Existing Pole, and Wires for Location 6	1	0%	04-Jan-24	04-Jan-24											
D&R-1450	Disconnect and Remove Existing Pole, and Wires for Location 46	1	0%	04-Jan-24	05-Jan-24											
D&R-1060	Disconnect and Remove Existing Pole, and Wires for Location 7	1	0%	05-Jan-24	05-Jan-24											
D&R-1460	Disconnect and Remove Existing Pole, and Wires for Location 47	1	0%	05-Jan-24	05-Jan-24											
D&R-1070	Disconnect and Remove Existing Pole, and Wires for Location 8	1	0%	05-Jan-24	05-Jan-24											
D&R-1470	Disconnect and Remove Existing Pole, and Wires for Location 48	1	0%	05-Jan-24	08-Jan-24											
D&R-1080	Disconnect and Remove Existing Pole, and Wires for Location 9	1	0%	08-Jan-24	08-Jan-24											
D&R-1480	Disconnect and Remove Existing Pole, and Wires for Location 49	1	0%	08-Jan-24	08-Jan-24											
D&R-1090	Disconnect and Remove Existing Pole, and Wires for Location 10	1	0%	08-Jan-24	08-Jan-24											
D&R-1490	Disconnect and Remove Existing Pole, and Wires for Location 50	1	0%	08-Jan-24	09-Jan-24											
D&R-1100	Disconnect and Remove Existing Pole, and Wires for Location 11	1	0%	09-Jan-24	09-Jan-24											
D&R-1500	Disconnect and Remove Existing Pole, and Wires for Location 51	1	0%	09-Jan-24	09-Jan-24											
D&R-1110																
D&R-1510																
D&R-1120																
D&R-1520																
D&R-1130																
D&R-1530	Disconnect and Remove Existing Pole, and Wires for Location 54	1	0%	10-Jan-24	11-Jan-24											
D&R-1140	Disconnect and Remove Existing Pole, and Wires for Location 15	1	0%	11-Jan-24	11-Jan-24											
D&R-1540	Disconnect and Remove Existing Pole, and Wires for Location 55	1	0%	11-Jan-24	11-Jan-24											
D&R-1150	Disconnect and Remove Existing Pole, and Wires for Location 16	1	0%	11-Jan-24	11-Jan-24											
D&R-1550	Disconnect and Remove Existing Pole, and Wires for Location 56	1	0%	11-Jan-24	12-Jan-24											
D&R-1160	Disconnect and Remove Existing Pole, and Wires for Location 17	1	0%	12-Jan-24	12-Jan-24											
D&R-1170	Disconnect and Remove Existing Pole, and Wires for Location 18	1	0%	12-Jan-24	12-Jan-24											
D&R-1180	Disconnect and Remove Existing Pole, and Wires for Location 19	1	0%	16-Jan-24	16-Jan-24											
D&R-1190	Disconnect and Remove Existing Pole, and Wires for Location 20	1	0%	16-Jan-24	16-Jan-24											
D&R-1200	Disconnect and Remove Existing Pole, and Wires for Location 21	1	0%	17-Jan-24	17-Jan-24											
D&R-1210	Disconnect and Remove Existing Pole, and Wires for Location 22	1	0%	17-Jan-24	17-Jan-24											

SAMPLE

█ Actual Work
 █ Critical Remaining Work
 █ Summary
█ Remaining Work
 ◆ Milestone



Activity ID	Activity Name	Original Duration	Activity % Complete	Start	Finish	Qtr 3, 2023			Qtr 4, 2023			Qtr 1, 2024			Qtr 2, 2024		
						Jul	Aug	Sep	Oct	Nov	Dec	Jan	Feb	Mar	Apr	May	
D&R-1220	Disconnect and Remove Existing Pole, and Wires for Location 23	1	0%	18-Jan-24	18-Jan-24								Disconnect and Remove Existing Pole, and Wires				
D&R-1230																	
D&R-1240																	
D&R-1250																	
D&R-1260																	
D&R-1270																	
D&R-1280	Disconnect and Remove Existing Pole, and Wires for Location 29	1	0%	23-Jan-24	23-Jan-24								Disconnect and Remove Existing Pole, and Wire				
D&R-1300	Disconnect and Remove Existing Pole, and Wires for Location 31	1	0%	23-Jan-24	23-Jan-24								Disconnect and Remove Existing Pole, and Wire				
SAWCUT AND REMOVE		37		02-Jan-24	26-Feb-24								26-Feb-24, SAWCUT AND REMC				
S&R-1000	Sawcut and Remove Rock Blanket, and Existing Foundation for Location Number 1	1	0%	02-Jan-24	03-Jan-24								Sawcut and Remove Rock Blanket, and Existing Foundat				
S&R-1010	Sawcut and Remove Rock Blanket, and Existing Foundation for Location Number 7	1	0%	05-Jan-24	08-Jan-24								Sawcut and Remove Rock Blanket, and Existing Found				
S&R-1020	Sawcut and Remove Rock Blanket, and Existing Foundation for Location Number 21	1	0%	17-Jan-24	18-Jan-24								Sawcut and Remove Rock Blanket, and Existing F				
S&R-1030																	
S&R-1040																	
S&R-1050																	
S&R-1060																	
S&R-1070																	
S&R-1080	Sawcut and Remove Rock Blanket, and Existing Foundation for Location Number 35	1	0%	29-Jan-24	29-Jan-24								Sawcut and Remove Rock Blanket, and Existi				
S&R-1090	Sawcut and Remove Rock Blanket, and Existing Foundation for Location Number 36	1	0%	30-Jan-24	30-Jan-24								Sawcut and Remove Rock Blanket, and Existi				
S&R-1100	Sawcut and Remove Rock Blanket, and Existing Foundation for Location Number 37	1	0%	31-Jan-24	31-Jan-24								Sawcut and Remove Rock Blanket, and Exis				
S&R-1110	Sawcut and Remove Rock Blanket, and Existing Foundation for Location Number 38	1	0%	01-Feb-24	01-Feb-24								Sawcut and Remove Rock Blanket, and Exis				
S&R-1120	Sawcut and Remove Rock Blanket, and Existing Foundation for Location Number 39	1	0%	02-Feb-24	02-Feb-24								Sawcut and Remove Rock Blanket, and Exi				
S&R-1130	Sawcut and Remove Rock Blanket, and Existing Foundation for Location Number 40	1	0%	05-Feb-24	05-Feb-24								Sawcut and Remove Rock Blanket, and E				
S&R-1140	Sawcut and Remove Rock Blanket, and Existing Foundation for Location Number 41	1	0%	06-Feb-24	06-Feb-24								Sawcut and Remove Rock Blanket, and E				
S&R-1150	Sawcut and Remove Rock Blanket, and Existing Foundation for Location Number 42	1	0%	07-Feb-24	07-Feb-24								Sawcut and Remove Rock Blanket, and E				
S&R-1160	Sawcut and Remove Rock Blanket, and Existing Foundation for Location Number 43	1	0%	08-Feb-24	08-Feb-24								Sawcut and Remove Rock Blanket, and				
S&R-1170	Sawcut and Remove Rock Blanket, and Existing Foundation for Location Number 45	1	0%	09-Feb-24	09-Feb-24								Sawcut and Remove Rock Blanket, and				
S&R-1180	Sawcut and Remove Rock Blanket, and Existing Foundation for Location Number 46	1	0%	13-Feb-24	13-Feb-24								Sawcut and Remove Rock Blanket, an				
S&R-1190																	
S&R-1200																	
S&R-1210																	
S&R-1220																	
S&R-1230																	
S&R-1240	Sawcut and Remove Rock Blanket, and Existing Foundation for Location Number 52	1	0%	22-Feb-24	22-Feb-24								Sawcut and Remove Rock Blanket				
S&R-1250	Sawcut and Remove Rock Blanket, and Existing Foundation for Location Number 53	1	0%	23-Feb-24	23-Feb-24								Sawcut and Remove Rock Blanke				
S&R-1260	Sawcut and Remove Rock Blanket, and Existing Foundation for Location Number 55	1	0%	26-Feb-24	26-Feb-24								Sawcut and Remove Rock Blank				
INSTALL CAGE, FOUNDATION AND ROCKET BLANKET		66		03-Jan-24	09-Apr-24								09-Apr-24, INS				
CFR-1000	Install Cage and Pour Foundation and Rocket Blanket for Location 1	1	0%	03-Jan-24	04-Jan-24								Install Cage and Pour Foundation and Rocket Blanket fo				
CFR-1010	Install Cage and Pour Foundation and Rocket Blanket for Location 7	1	0%	08-Jan-24	09-Jan-24								Install Cage and Pour Foundation and Rocket Blanket				
CFR-1020	Install Cage and Pour Foundation and Rocket Blanket for Location 21	1	0%	18-Jan-24	19-Jan-24								Install Cage and Pour Foundation and Rocket Bla				
CFR-1030	Install Cage and Pour Foundation and Rocket Blanket for Location 22	1	0%	19-Jan-24	22-Jan-24								Install Cage and Pour Foundation and Rocket Bl				
CFR-1040	Install Cage and Pour Foundation and Rocket Blanket for Location 30	1	0%	22-Jan-24	23-Jan-24								Install Cage and Pour Foundation and Rocket B				
CFR-1050	Install Cage and Pour Foundation and Rocket Blanket for Location 31	1	0%	25-Jan-24	25-Jan-24								Install Cage and Pour Foundation and Rocket B				
CFR-1060																	
CFR-1070																	
CFR-1080																	
CFR-1090																	
CFR-1100																	

SAMPLE



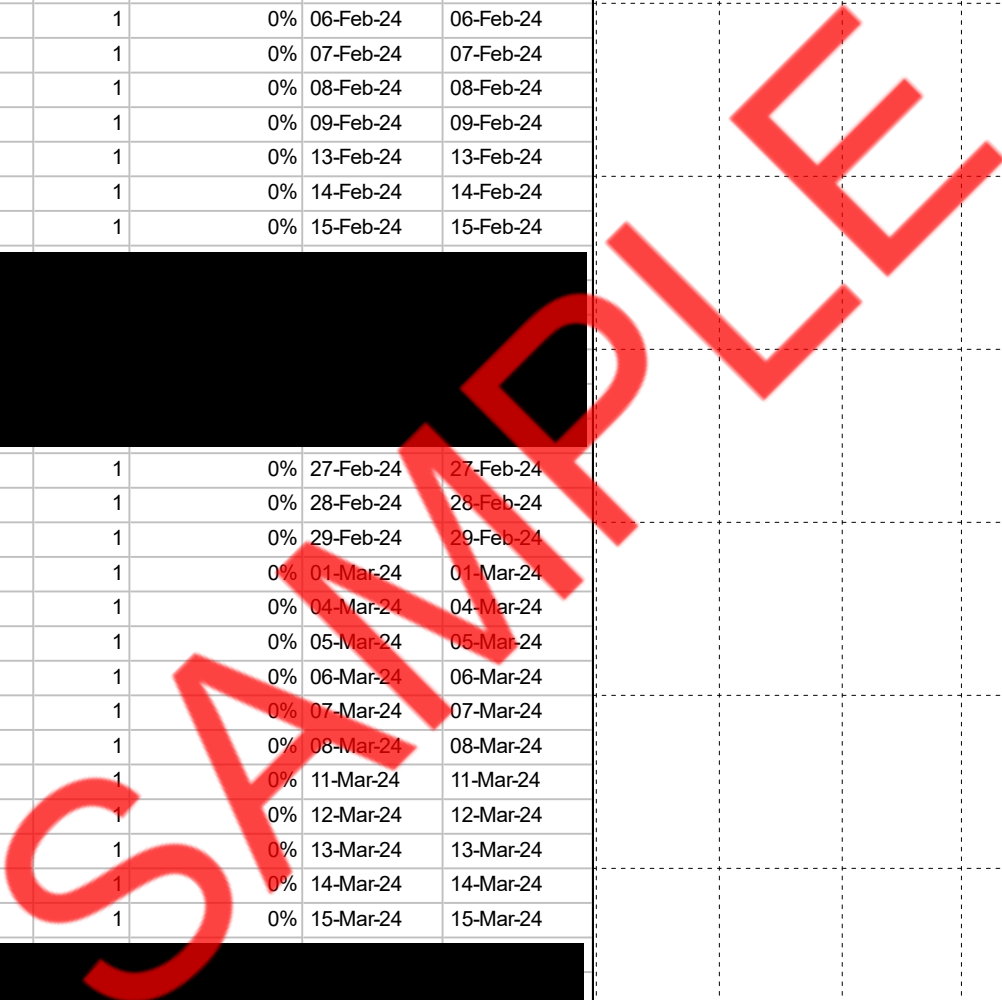
Activity ID	Activity Name	Original Duration	Activity % Complete	Start	Finish	Qtr 3, 2023			Qtr 4, 2023			Qtr 1, 2024			Qtr 2, 2024	
						Jul	Aug	Sep	Oct	Nov	Dec	Jan	Feb	Mar	Apr	May
CFR-1110	Install Cage and Pour Foundation and Rocket Blanket for Location 38	1	0%	02-Feb-24	02-Feb-24											Install Cage and Pour Foundation and Rock
CFR-1120																
CFR-1130																
CFR-1140																
CFR-1150																
CFR-1160																
CFR-1170	Install Cage and Pour Foundation and Rocket Blanket for Location 45	1	0%	13-Feb-24	13-Feb-24											Install Cage and Pour Foundation and
CFR-1180	Install Cage and Pour Foundation and Rocket Blanket for Location 46	1	0%	14-Feb-24	14-Feb-24											Install Cage and Pour Foundation and
CFR-1190	Install Cage and Pour Foundation and Rocket Blanket for Location 47	1	0%	15-Feb-24	15-Feb-24											Install Cage and Pour Foundation and
CFR-1200	Install Cage and Pour Foundation and Rocket Blanket for Location 48	1	0%	16-Feb-24	16-Feb-24											Install Cage and Pour Foundation and
CFR-1210	Install Cage and Pour Foundation and Rocket Blanket for Location 49	1	0%	20-Feb-24	20-Feb-24											Install Cage and Pour Foundation a
CFR-1220	Install Cage and Pour Foundation and Rocket Blanket for Location 50	1	0%	21-Feb-24	21-Feb-24											Install Cage and Pour Foundation a
CFR-1230	Install Cage and Pour Foundation and Rocket Blanket for Location 51	1	0%	22-Feb-24	22-Feb-24											Install Cage and Pour Foundation
CFR-1240	Install Cage and Pour Foundation and Rocket Blanket for Location 52	1	0%	23-Feb-24	23-Feb-24											Install Cage and Pour Foundation
CFR-1250	Install Cage and Pour Foundation and Rocket Blanket for Location 53	1	0%	26-Feb-24	26-Feb-24											Install Cage and Pour Foundation
CFR-1260																
CFR-1270																
CFR-1280																
CFR-1290																
CFR-1300																
CFR-1310																
CFR-1320	Remove Existing Foundation, Install Cage and Pour Foundation for Location 8	1	0%	06-Mar-24	06-Mar-24											Remove Existing Foundation
CFR-1330	Remove Existing Foundation, Install Cage and Pour Foundation for Location 9	1	0%	07-Mar-24	07-Mar-24											Remove Existing Foundation
CFR-1340	Remove Existing Foundation, Install Cage and Pour Foundation for Location 10	1	0%	08-Mar-24	08-Mar-24											Remove Existing Foundation
CFR-1350	Remove Existing Foundation, Install Cage and Pour Foundation for Location 11	1	0%	11-Mar-24	11-Mar-24											Remove Existing Foundati
CFR-1360	Remove Existing Foundation, Install Cage and Pour Foundation for Location 12	1	0%	12-Mar-24	12-Mar-24											Remove Existing Foundati
CFR-1370	Remove Existing Foundation, Install Cage and Pour Foundation for Location 13	1	0%	13-Mar-24	13-Mar-24											Remove Existing Foundat
CFR-1380	Remove Existing Foundation, Install Cage and Pour Foundation for Location 14	1	0%	14-Mar-24	14-Mar-24											Remove Existing Founda
CFR-1390	Remove Existing Foundation, Install Cage and Pour Foundation for Location 15	1	0%	15-Mar-24	15-Mar-24											Remove Existing Founda
CFR-1400	Remove Existing Foundation, Install Cage and Pour Foundation for Location 16	1	0%	18-Mar-24	18-Mar-24											Remove Existing Found
CFR-1410	Remove Existing Foundation, Install Cage and Pour Foundation for Location 17	1	0%	19-Mar-24	19-Mar-24											Remove Existing Found
CFR-1420																
CFR-1430																
CFR-1440																
CFR-1450																
CFR-1460																
CFR-1470																
CFR-1480	Remove Existing Foundation, Install Cage and Pour Foundation for Location 26	1	0%	28-Mar-24	28-Mar-24											Remove Existing Fo
CFR-1490	Remove Existing Foundation, Install Cage and Pour Foundation for Location 27	1	0%	29-Mar-24	29-Mar-24											Remove Existing F
CFR-1500	Remove Existing Foundation, Install Cage and Pour Foundation for Location 28	1	0%	02-Apr-24	02-Apr-24											Remove Existing
CFR-1510	Remove Existing Foundation, Install Cage and Pour Foundation for Location 29	1	0%	03-Apr-24	03-Apr-24											Remove Existing
CFR-1520	Remove Existing Foundation, Install Cage and Pour Foundation for Location 32	1	0%	04-Apr-24	04-Apr-24											Remove Existing
CFR-1530	Remove Existing Foundation, Install Cage and Pour Foundation for Location 44	1	0%	05-Apr-24	05-Apr-24											Remove Existing
CFR-1540	Remove Existing Foundation, Install Cage and Pour Foundation for Location 54	1	0%	08-Apr-24	08-Apr-24											Remove Existi
CFR-1550	Remove Existing Foundation, Install Cage and Pour Foundation for Location 56	1	0%	09-Apr-24	09-Apr-24											Remove Existi
INSTALL POLE, SIGNAL AND SIGNS, RUN CABLES AND ENERGIZE		66		05-Jan-24	12-Apr-24											12-Apr-24, IN
PSE-1000	Install Pole, Signal, and Signs. Run Cables and Energize for Location 1	1	0%	05-Jan-24	08-Jan-24											Install Pole, Signal, and Signs. Run Cables and Energ
PSE-1010	Install Pole, Signal, and Signs. Run Cables and Energize for Location 7	1	0%	09-Jan-24	09-Jan-24											Install Pole, Signal, and Signs. Run Cables and Energi

SAMPLE

█ Actual Work
 █ Critical Remaining Work
 Summary
█ Remaining Work
 ◆ Milestone



Activity ID	Activity Name	Original Duration	Activity % Complete	Start	Finish	Qtr 3, 2023			Qtr 4, 2023			Qtr 1, 2024			Qtr 2, 2024		
						Jul	Aug	Sep	Oct	Nov	Dec	Jan	Feb	Mar	Apr	May	
PSE-1020	Install Pole, Signal, and Signs. Run Cables and Energize for Location 21	1	0%	22-Jan-24	23-Jan-24												Install Pole, Signal, and Signs. Run Cables and
PSE-1030	Install Pole, Signal, and Signs. Run Cables and Energize for Location 22	1	0%	23-Jan-24	24-Jan-24												Install Pole, Signal, and Signs. Run Cables and
PSE-1040																	
PSE-1050																	
PSE-1060																	
PSE-1070																	
PSE-1080																	
PSE-1090																	
PSE-1100	Install Pole, Signal, and Signs. Run Cables and Energize for Location 37	1	0%	05-Feb-24	05-Feb-24												Install Pole, Signal, and Signs. Run Cables
PSE-1110	Install Pole, Signal, and Signs. Run Cables and Energize for Location 38	1	0%	06-Feb-24	06-Feb-24												Install Pole, Signal, and Signs. Run Cable
PSE-1120	Install Pole, Signal, and Signs. Run Cables and Energize for Location 39	1	0%	07-Feb-24	07-Feb-24												Install Pole, Signal, and Signs. Run Cable
PSE-1130	Install Pole, Signal, and Signs. Run Cables and Energize for Location 40	1	0%	08-Feb-24	08-Feb-24												Install Pole, Signal, and Signs. Run Cable
PSE-1140	Install Pole, Signal, and Signs. Run Cables and Energize for Location 41	1	0%	09-Feb-24	09-Feb-24												Install Pole, Signal, and Signs. Run Cabl
PSE-1150	Install Pole, Signal, and Signs. Run Cables and Energize for Location 42	1	0%	13-Feb-24	13-Feb-24												Install Pole, Signal, and Signs. Run Ca
PSE-1160	Install Pole, Signal, and Signs. Run Cables and Energize for Location 43	1	0%	14-Feb-24	14-Feb-24												Install Pole, Signal, and Signs. Run Ca
PSE-1170	Install Pole, Signal, and Signs. Run Cables and Energize for Location 45	1	0%	15-Feb-24	15-Feb-24												Install Pole, Signal, and Signs. Run Ca
PSE-1180																	
PSE-1190																	
PSE-1200																	
PSE-1210																	
PSE-1220																	
PSE-1230																	
PSE-1240	Install Pole, Signal, and Signs. Run Cables and Energize for Location 52	1	0%	27-Feb-24	27-Feb-24												Install Pole, Signal, and Signs. R
PSE-1250	Install Pole, Signal, and Signs. Run Cables and Energize for Location 53	1	0%	28-Feb-24	28-Feb-24												Install Pole, Signal, and Signs. F
PSE-1260	Install Pole, Signal, and Signs. Run Cables and Energize for Location 55	1	0%	29-Feb-24	29-Feb-24												Install Pole, Signal, and Signs. I
PSE-1270	Install Pole, Signal, and Signs. Run Cables and Energize for Location 2	1	0%	01-Mar-24	01-Mar-24												Install Pole, Signal, and Signs.
PSE-1280	Install Pole, Signal, and Signs. Run Cables and Energize for Location 3	1	0%	04-Mar-24	04-Mar-24												Install Pole, Signal, and Signs
PSE-1290	Install Pole, Signal, and Signs. Run Cables and Energize for Location 4	1	0%	05-Mar-24	05-Mar-24												Install Pole, Signal, and Signs
PSE-1300	Install Pole, Signal, and Signs. Run Cables and Energize for Location 5	1	0%	06-Mar-24	06-Mar-24												Install Pole, Signal, and Sign
PSE-1310	Install Pole, Signal, and Signs. Run Cables and Energize for Location 6	1	0%	07-Mar-24	07-Mar-24												Install Pole, Signal, and Sign
PSE-1320	Install Pole, Signal, and Signs. Run Cables and Energize for Location 8	1	0%	08-Mar-24	08-Mar-24												Install Pole, Signal, and Sign
PSE-1330	Install Pole, Signal, and Signs. Run Cables and Energize for Location 9	1	0%	11-Mar-24	11-Mar-24												Install Pole, Signal, and Sig
PSE-1340	Install Pole, Signal, and Signs. Run Cables and Energize for Location 10	1	0%	12-Mar-24	12-Mar-24												Install Pole, Signal, and Si
PSE-1350	Install Pole, Signal, and Signs. Run Cables and Energize for Location 11	1	0%	13-Mar-24	13-Mar-24												Install Pole, Signal, and S
PSE-1360	Install Pole, Signal, and Signs. Run Cables and Energize for Location 12	1	0%	14-Mar-24	14-Mar-24												Install Pole, Signal, and S
PSE-1370	Install Pole, Signal, and Signs. Run Cables and Energize for Location 13	1	0%	15-Mar-24	15-Mar-24												Install Pole, Signal, and S
PSE-1380																	
PSE-1390																	
PSE-1400																	
PSE-1410																	
PSE-1420																	
PSE-1430																	
PSE-1440																	
PSE-1450	Install Pole, Signal, and Signs. Run Cables and Energize for Location 23	1	0%	27-Mar-24	27-Mar-24												Install Pole, Signal,
PSE-1460	Install Pole, Signal, and Signs. Run Cables and Energize for Location 24	1	0%	28-Mar-24	28-Mar-24												Install Pole, Signal,
PSE-1470	Install Pole, Signal, and Signs. Run Cables and Energize for Location 25	1	0%	29-Mar-24	29-Mar-24												Install Pole, Signal,
PSE-1480	Install Pole, Signal, and Signs. Run Cables and Energize for Location 26	1	0%	02-Apr-24	02-Apr-24												Install Pole, Sign
PSE-1490	Install Pole, Signal, and Signs. Run Cables and Energize for Location 27	1	0%	03-Apr-24	03-Apr-24												Install Pole, Sign



■ Actual Work
 ■ Critical Remaining Work
 ▼ Summary
■ Remaining Work
 ◆ Milestone



Activity ID	Activity Name	Original Duration	Activity % Complete	Start	Finish	Qtr 3, 2023			Qtr 4, 2023			Qtr 1, 2024			Qtr 2, 2024	
						Jul	Aug	Sep	Oct	Nov	Dec	Jan	Feb	Mar	Apr	May
PSE-1500	Install Pole, Signal, and Signs. Run Cables and Energize for Location 28	1	0%	04-Apr-24	04-Apr-24											Install Pole, Sigr
PSE-1510																
PSE-1520																
PSE-1530																
PSE-1540	Install Pole, Signal, and Signs. Run Cables and Energize for Location 54	1	0%	10-Apr-24	10-Apr-24											Install Pole, S
PSE-1550	Install Pole, Signal, and Signs. Run Cables and Energize for Location 56	1	0%	11-Apr-24	11-Apr-24											Install Pole, S
PSE-1560	Temporary Soil Binder	1	0%	11-Apr-24	12-Apr-24											Temporary S
PROJECT CLOSEOUT		6		12-Apr-24	22-Apr-24											▼ 22-Apr-2
PCO-1010	Final Cleanup	1	0%	12-Apr-24	15-Apr-24											■ Final Clean
PCO-1000	Post Construction operational status check of all elements	1	0%	12-Apr-24	15-Apr-24											■ Post Const
PCO-1020	Punchlist and Corrections	3	0%	15-Apr-24	18-Apr-24											■ Punchlist
PCO-1030	Remove Construction Signs	1	0%	18-Apr-24	19-Apr-24											■ Remove C
PCO-1050	Department-owned float	0	0%	19-Apr-24	19-Apr-24											Departme
PCO-1040	Demobilization	1	0%	19-Apr-24	22-Apr-24											■ Demobil

SAMPLE