

PALMER STREET EXTENSION

Baseline Schedule



Activity ID	Activity Name	Original Duration	Start	Finish	Predecessors	Calendar	August 2022							September 2022				October 2022				November 2022				December 2022				January 2023			February 2023																																																																																					
							06	13	20	27	03	10	17	24	01	08	15	22	29	05	12	19	26	03	10	17	24	31	07	14	21	28	04	11																																																																																				
PALMER STREET EXTENSION							359																												15-Aug-22																												24-Jan-24																												PSE- 5 DAYS																											
PRELIMINARIES							13																												15-Aug-22																												31-Aug-22																												PSE- 5 DAYS																											
PRE-100	Notice to Proceed	0	15-Aug-22				PSE- 5 DAYS																																																																																																															
PRE-110	Permits Approval	7	15-Aug-22	23-Aug-22	PRE-100		PSE- 5 DAYS																																																																																																															
PRE-120	Mobilization	6	24-Aug-22	31-Aug-22	PRE-100,PRE-110		PSE- 5 DAYS																																																																																																															
EXECUTION							326																												01-Sep-22																												22-Dec-23																												PSE- 5 DAYS																											
STAGE-1 BEACH STREET							80																												01-Sep-22																												28-Dec-22																												PSE- 5 DAYS																											
STA. 1+64.99 TO STA. 11+01.46							80																												01-Sep-22																												28-Dec-22																												PSE- 5 DAYS																											
BS-100	Traffic Control	4	01-Sep-22	07-Sep-22	PRE-120		PSE- 5 DAYS																																																																																																															
BS-110	Erosion & Sediment Control	7	08-Sep-22	16-Sep-22	BS-100		PSE- 5 DAYS																																																																																																															
BS-120							PSE- 5 DAYS																																																																																																															
BS-130							PSE- 5 DAYS																																																																																																															
BS-140							PSE- 5 DAYS																																																																																																															
BS-150							PSE- 5 DAYS																																																																																																															
BS-160							PSE- 5 DAYS																																																																																																															
BS-170	Inlet Frame	5	06-Oct-22	13-Oct-22	BS-160		PSE- 5 DAYS																																																																																																															
BS-180	Inlet Protection	6	11-Oct-22	18-Oct-22	BS-170		PSE- 5 DAYS																																																																																																															
BS-190	Water Valve Box	7	13-Oct-22	21-Oct-22	BS-180		PSE- 5 DAYS																																																																																																															
BS-200	Water Valve Frame and Cover	4	20-Oct-22	25-Oct-22	BS-190		PSE- 5 DAYS																																																																																																															
BS-210	Installation of Dip Fire Service	7	13-Oct-22	21-Oct-22	BS-160		PSE- 5 DAYS																																																																																																															
BS-220							PSE- 5 DAYS																																																																																																															
BS-230							PSE- 5 DAYS																																																																																																															
BS-240							PSE- 5 DAYS																																																																																																															
BS-250							PSE- 5 DAYS																																																																																																															
BS-260							PSE- 5 DAYS																																																																																																															
BS-270	Concrete Side Walk	6	15-Nov-22	22-Nov-22	BS-230		PSE- 5 DAYS																																																																																																															
BS-280	Driveway Apoms	7	23-Nov-22	02-Dec-22	BS-270		PSE- 5 DAYS																																																																																																															
BS-290	Planters	6	05-Dec-22	12-Dec-22	BS-280		PSE- 5 DAYS																																																																																																															
BS-300	Placing of Top Soil	4	13-Dec-22	16-Dec-22	BS-290		PSE- 5 DAYS																																																																																																															
BS-310	Landscaping Works (Trees, Shrubs Groui	7	19-Dec-22	28-Dec-22	BS-300		PSE- 5 DAYS																																																																																																															
BS-320	Installation of Detectable Warning Surface	4	30-Nov-22	05-Dec-22	BS-260		PSE- 5 DAYS																																																																																																															
BS-330	Pavement & Lane Marking	3	06-Dec-22	08-Dec-22	BS-320		PSE- 5 DAYS																																																																																																															
BS-340	Cycle Line Coating	2	09-Dec-22	12-Dec-22	BS-330		PSE- 5 DAYS																																																																																																															
BS-350							PSE- 5 DAYS																																																																																																															
BS-360							PSE- 5 DAYS																																																																																																															
BS-370							PSE- 5 DAYS																																																																																																															
BS-380							PSE- 5 DAYS																																																																																																															
STAGE-2 PALMER STREET							71																												19-Sep-22																												30-Dec-22																												PSE- 5 DAYS																											
STA. 1+00.00 TO STA. 5+24.87							71																												19-Sep-22																												30-Dec-22																												PSE- 5 DAYS																											
PS-100	Traffic Control	3	19-Sep-22	21-Sep-22	BS-110		PSE- 5 DAYS																																																																																																															
PS-110	Erosion & Sediment Control	6	22-Sep-22	29-Sep-22	PS-100		PSE- 5 DAYS																																																																																																															
PS-120							PSE- 5 DAYS																																																																																																															
PS-130							PSE- 5 DAYS																																																																																																															
PS-140							PSE- 5 DAYS																																																																																																															
PS-150							PSE- 5 DAYS																																																																																																															
PS-160	Inlet Frame	4	01-Nov-22	04-Nov-22	PS-150		PSE- 5 DAYS																																																																																																															
PS-170	Inlet Protection	5	07-Nov-22	14-Nov-22	PS-160		PSE- 5 DAYS																																																																																																															
PS-180	Excavation	4	26-Oct-22	31-Oct-22	PS-140		PSE- 5 DAYS																																																																																																															
PS-190	Subbase	9	28-Oct-22	09-Nov-22	PS-180		PSE- 5 DAYS																																																																																																															
PS-200							PSE- 5 DAYS																																																																																																															
PS-210							PSE- 5 DAYS																																																																																																															
PS-220							PSE- 5 DAYS																																																																																																															
PS-230	Asphalt Tack Coat	3	23-Nov-22	28-Nov-22	PS-220		PSE- 5 DAYS																																																																																																															
PS-240	Asphalt Wearing Course	3	29-Nov-22	01-Dec-22	PS-230		PSE- 5 DAYS																																																																																																															
PS-250	Concrete Side Walk	3	16-Nov-22	18-Nov-22	PS-210		PSE- 5 DAYS																																																																																																															
PS-260							PSE- 5 DAYS																																																																																																															
PS-270							PSE- 5 DAYS																																																																																																															
PS-280							PSE- 5 DAYS																																																																																																															

SAMPLE

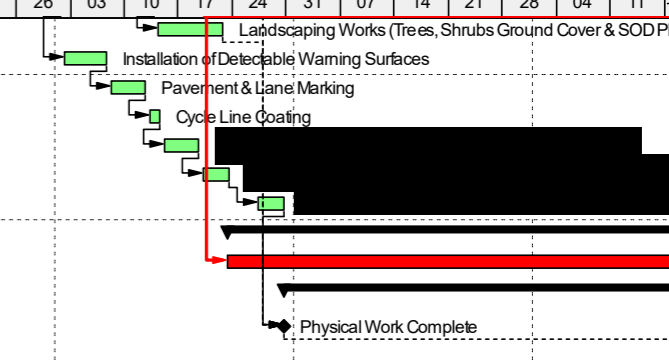
■ Actual Work
 ■ Critical Remaining Work
 ▼ Summary
■ Remaining Work
 ◆ Milestone

PALMER STREET EXTENSION

Baseline Schedule



Activity ID	Activity Name	Original Duration	Start	Finish	Predecessors	Calendar	Calendar																											
							August 2022				September 2022				October 2022				November 2022				December 2022				January 2023				February 2023			
							06	13	20	27	03	10	17	24	01	08	15	22	29	05	12	19	26	03	10	17	24	31	07	14	21	28	04	11
PS-290	Landscaping Works (Trees, Shrubs Grou	7	14-Dec-22	22-Dec-22	PS-280	PSE- 5 DAYS																												
PS-300	Installation of Detectable Warning Surface	4	02-Dec-22	07-Dec-22	PS-240	PSE- 5 DAYS																												
PS-310	Pavement & Lane Marking	3	08-Dec-22	12-Dec-22	PS-300	PSE- 5 DAYS																												
PS-320																																		
PS-330																																		
PS-340																																		
PS-350	Installation of Fire Hydrant	4	27-Dec-22	30-Dec-22	PS-340	PSE- 5 DAYS																												
PLANT ESTABLISHMENT			249	23-Dec-22	22-Dec-23		PSE- 5 DAYS																											
PE-100	Plant Establishment	249	23-Dec-22	22-Dec-23	BS-380	PSE- 5 DAYS																												
CLOSE OUT			264	30-Dec-22	24-Jan-24		PSE- 5 DAYS																											
CO-050	Physical Work Complete	0		30-Dec-22	PS-350, PS-290, BS-3	PSE- 5 DAYS																												
CO-100	Substantial Completion	0		22-Dec-23	BS-360, PE-100, CO-0	PSE- 5 DAYS																												
CO-110	Submission and Approval of As-Built Draw	6	26-Dec-23	03-Jan-24	CO-100	PSE- 5 DAYS																												
CO-120																																		
CO-130																																		
CO-140																																		
CO-150	Final Completion	0		24-Jan-24	CO-140	PSE- 5 DAYS																												



SAMPLE