



Activity ID	Activity Name	Original Duration	Start	Finish	Activity % Complete	Qtr 3, 2022			Qtr 4, 2022			Qtr 1, 2023			Qtr 2, 2023			Qtr 3, 2023			Qtr 4, 2023			Qtr 1, 2024			Qtr 2, 2024			Qtr 3, 2024			4, 2024			
						Jul	Aug	Sep	Oct	Nov	Dec	Jan	Feb	Mar	Apr	May	Jun	Jul	Aug	Sep	Oct	Nov	Dec	Jan	Feb	Mar	Apr	May	Jun	Jul	Aug	Sep	Oct			
<b>T4605 - SR 802 / Military Trail Update 8-20-23</b>						558	27-Jun-22 A	18-Sep-24																												
<b>T4605 - SR 802 / Military Trail</b>						558	27-Jun-22 A	18-Sep-24																												
<b>General Conditions</b>						31	27-Jun-22 A	09-Aug-22 A																												
Date of Contract Execution, 27-Jun-22 A																																				
Preconstruction video																																				
Submit NOI																																				
8	Submit NOI	5	03-Aug-22 A	09-Aug-22 A	100%																															
9	NOI Processing	5	10-Aug-22 A	16-Aug-22 A	100%																															
<b>Submittals</b>						412	26-Jul-22 A	21-Mar-24																												
<b>Submittal Preparation</b>						303	26-Jul-22 A	10-Oct-23																												
Signs																																				
19	Signs	10	26-Jul-22 A	08-Aug-22 A	100%																															
Pipe handrail																																				
20	Pipe handrail	10	21-Aug-23	01-Sep-23	0%																															
<b>Submittal Review and Acceptance</b>						312	09-Aug-22 A	06-Nov-23																												
Signs																																				
29	Signs	19	09-Aug-22 A	02-Sep-22 A	100%																															
Pipe Handrail																																				
30	Pipe Handrail	19	05-Sep-23	29-Sep-23	0%																															
<b>Fabrication and Delivery</b>						383	06-Sep-22 A	21-Mar-24																												
Drainage Material																																				
Signs																																				
39	Signs	20	21-Aug-23	18-Sep-23	0%																															
Pipe Handrail																																				
40	Pipe Handrail	40	02-Oct-23	30-Nov-23	0%																															
<b>Construction</b>						470	31-Oct-22 A	18-Sep-24																												
<b>Mobilization</b>						1	31-Oct-22 A	31-Oct-22 A																												
44	Mobilization	1	31-Oct-22 A	31-Oct-22 A	100%																															
<b>Construction</b>						469	01-Nov-22 A	18-Sep-24																												
Tree relocation and disposition																																				



█ Actual Level of Effort   
 █ Remaining Work   
 ◆ Milestone   
 █ Critical Remaining Work   
 ▼ summary



Activity ID	Activity Name	Original Duration	Start	Finish	Activity % Complete	Qtr 3, 2022		Qtr 4, 2022		Qtr 1, 2023			Qtr 2, 2023			Qtr 3, 2023			Qtr 4, 2023			Qtr 1, 2024			Qtr 2, 2024			Qtr 3, 2024			4, 2024
						Jul	Aug	Sep	Oct	Nov	Dec	Jan	Feb	Mar	Apr	May	Jun	Jul	Aug	Sep	Oct	Nov	Dec	Jan	Feb	Mar	Apr	May	Jun	Jul	Aug
51	Clearing and grubbing	3	28-Nov-22 A	30-Nov-22 A	100%																										
50	WUS #3 to #5 - COLW - R/R Pole	15	09-Nov-22 A	01-Dec-22 A	100%																										
52	Dewatering permit	45	21-Aug-23	24-Oct-23	0%																										
<b>Maintenance of Traffic</b>						1																									
<b>Drainage</b>						215	06-Feb-23 A	15-Dec-23																							
<b>S-15</b>						3	06-Feb-23 A	08-Feb-23 A																							
57	MH Top	1	08-Feb-23 A	08-Feb-23 A	100%																										
<b>S-16</b>						2	25-Oct-23	26-Oct-23																							
59	Structure and Top	1	25-Oct-23	25-Oct-23	0%																										
60	13 LF of 18"	1	26-Oct-23	26-Oct-23	0%																										
<b>S-17 to S-18 (Night work)</b>						5	08-Nov-23	15-Nov-23																							
62	Replace 94 LF 18"	5	08-Nov-23	15-Nov-23	0%																										
<b>S-23 to S-24 (Nightwork)</b>						36	17-Oct-23	08-Dec-23																							
64	WUS #25 - AT&T - Buried Telephone Cable	6	17-Oct-23	24-Oct-23	0%																										
65	S-23	1	28-Nov-23	28-Nov-23	0%																										
66	S-24	1	29-Nov-23	29-Nov-23	0%																										
69	Replace 96 LF 29" x 45"	5	04-Dec-23	08-Dec-23	0%																										
<b>S-26 to S-27 (Night work)</b>						5	11-Dec-23	15-Dec-23																							
<b>Widening</b>						195	29-Mar-23 A	09-Jan-24																							
74	Service and connection point for water pump	30	01-Nov-23	15-Dec-23	0%																										
83	Sidewalk	3	27-Dec-23	29-Dec-23	0%																										
85	SP-12.5 1.5"	1	05-Jan-24	05-Jan-24	0%																										
<b>Lighting</b>						4	21-Aug-23	24-Aug-23																							
78	Relocate and retrofit pole 351+61	2	23-Aug-23	24-Aug-23	0%																										
<b>Fcurb</b>						4	20-Dec-23	26-Dec-23																							
82	Pour	2	22-Dec-23	26-Dec-23	0%																										
<b>Forcemain</b>						229	28-Nov-22 A	26-Oct-23																							
96	ARV#1-1	3	29-Nov-22 A	01-Dec-22 A	100%																										

SAMPLE

█ Actual Level of Effort   
 █ Remaining Work   
 ◆ Milestone  
█ Actual Work   
 █ Critical Remaining Work   
 ▼ summary



Activity ID	Activity Name	Original Duration	Start	Finish	Activity % Complete
110	306+76.21 to 306+92.21 8" FM	1	16-Dec-22 A	16-Dec-22 A	100%
218	376+86 to 384+11 8" FM	11	09-Dec-22 A	23-Dec-22 A	100%
216	8" Gate Valve	1	27-Dec-22 A	27-Dec-22 A	100%
112	306+92.21 to 311+10 8" FM	7	20-Dec-22 A	29-Dec-22 A	100%
220	4" FM Lateral South at 378+46.9	2	28-Dec-22 A	29-Dec-22 A	100%
123	8" Gate Valve	1	30-Dec-22 A	30-Dec-22 A	100%
221	4" FM Lateral South at 380+25.10	2	30-Dec-22 A	03-Jan-23 A	100%
217	Pressure test for Flowable fill Install	2	10-Jan-23 A	11-Jan-23 A	100%
122	Restore 10 LF of Curb and Sidewalk	1	12-Jan-23 A	12-Jan-23 A	100%
219	Flowable fill	1	12-Jan-23 A	12-Jan-23 A	100%
226	Restore 10 LF of Curb and Sidewalk	1	12-Jan-23 A	12-Jan-23 A	100%
223	Restore 10 LF of Curb and Sidewalk	1	12-Jan-23 A	13-Jan-23 A	100%
124	Pressure test for Flowable fill Install	2	12-Jan-23 A	13-Jan-23 A	100%
125	Flowable fill	1	17-Jan-23 A	17-Jan-23 A	100%
138	8" Gate Valve	1	03-Feb-23 A	03-Feb-23 A	100%
129	Restore 10 LF of Curb and Sidewalk	1	08-Feb-23 A	08-Feb-23 A	100%
206	363+90 to 371+93 8" FM	10	30-Jan-23 A	10-Feb-23 A	100%
132	4" FM Lateral South at 316+78.15	2	10-Feb-23 A	14-Feb-23 A	100%
197	8" Gate Valve	1	02-Mar-23 A	02-Mar-23 A	100%

- 302+14.23 to 303+87.22 8" FM
- | 8" FM Lateral South at 387+03.21
- | 303+87.22 8" FM Offset
- | Restore 10 LF of Curb and Sidewalk
- 304+14.22 to 306+47.21 8" FM
- ARV #2-1
- | 306+47.21 8" FM Offset
- | 306+76.21 to 306+92.21 8" FM
- 376+86 to 384+11 8" FM
- | 8" Gate Valve
- 306+92.21 to 311+10 8" FM
- | 4" FM Lateral South at 378+46.9
- | 8" Gate Valve
- 4" FM Lateral South at 380+25.10
- ARV# 21-1
- | 4" FM from lateral to Ex 2" FM at 306+94.78
- | 4" FM Lateral South at 381+78.11
- | Restore 10 LF of Curb and Sidewalk
- ARV #4-1
- 4" FM Lateral South at 384+10.13
- 4" FM lateral South at 311+04.24
- Pressure test for Flowable fill Install
- | Restore 10 LF of Curb and Sidewalk
- | Flowable fill
- | Restore 10 LF of Curb and Sidewalk
- | Restore 10 LF of Curb and Sidewalk
- | Pressure test for Flowable fill Install
- | Flowable fill
- 299+25 to 300+10 12" FM
- 371+93 to 376+86 8" FM
- | 300+50 to 301+20 12" FM
- | 8" Gate Valve
- 4" FM Lateral South at 376+85.9
- | Restore 10 LF of Curb and Sidewalk
- 311+10 to 320+05.11 8" FM
- | 8" Gate Valve
- | Restore 10 LF of Curb and Sidewalk
- 363+90 to 371+93 8" FM
- 4" FM Lateral South at 316+78.15
- | 8" Gate Valve
- ARV #5-1
- | 4" FM Lateral South at 320+02.11
- | 4" FM Lateral South at 371+92.10
- | Restore 10 LF of Curb and Sidewalk
- | Restore 10 LF of Curb and Sidewalk
- 359+40 to 363+90 8" FM
- | 8" Gate Valve
- 4" FM Lateral South at 361+94.11

SAMPLE

■ Actual Level of Effort   
 ■ Remaining Work   
 ■ Critical Remaining Work   
 ◆ ◆ Milestone   
 ▼ summary



Activity ID	Activity Name	Original Duration	Start	Finish	Activity % Complete	
203	Restore 10 LF of Curb and Sidewalk	1	13-Mar-23 A	13-Mar-23 A	100%	320+05.11 to 327+55 8" FM
145	6" FM lateral South at 325+43.22	2	13-Mar-23 A	14-Mar-23 A	100%	8" Gate Valve
147	Restore 10 LF of Curb and Sidewalk	1	15-Mar-23 A	15-Mar-23 A	100%	4" FM Lateral South at 363+83.11
158	8" Gate Valve	1	28-Mar-23 A	28-Mar-23 A	100%	4" FM Lateral South at 324+62.21
154	4" FM Lateral South at 329+39.25	2	29-Mar-23 A	30-Mar-23 A	100%	Restore 10 LF of Curb and Sidewalk
194	Restore 10 LF of Curb and Sidewalk	1	30-Mar-23 A	30-Mar-23 A	100%	Restore 10 LF of Curb and Sidewalk
182	8" Gate Valve	1	18-Apr-23 A	18-Apr-23 A	100%	6" FM lateral South at 325+43.22
174	8" Gate Valve	1	02-May-23 A	02-May-23 A	100%	Restore 10 LF of Curb and Sidewalk
100	301+20 to 302+14.23 12 FM & 8 Reducer	2	15-Jun-23 A	16-Jun-23 A	100%	4" FM Lateral South at 327+30.18
143	ARV #7-1 (Night)	1	26-Jun-23 A	26-Jun-23 A	100%	4" FM Lateral South at 327+54.18
93	300+10 12" FM Offset	2	30-Aug-23	31-Aug-23	0%	354+22 to 359+40 8" FM

SAMPLE

- 320+05.11 to 327+55 8" FM
- | 8" Gate Valve
- | 4" FM Lateral South at 363+83.11
- | 4" FM Lateral South at 324+62.21
- | Restore 10 LF of Curb and Sidewalk
- | Restore 10 LF of Curb and Sidewalk
- | 6" FM lateral South at 325+43.22
- | Restore 10 LF of Curb and Sidewalk
- | 4" FM Lateral South at 327+30.18
- | 4" FM Lateral South at 327+54.18
- | 354+22 to 359+40 8" FM
- | 8" Gate Valve
- | 327+55 to 329+40 8" FM
- | 8" Gate Valve
- | 4" FM Lateral South at 329+39.25
- | Restore 10 LF of Curb and Sidewalk
- | 4" FM Lateral South at 359+39.11
- | Restore 10 LF of Curb and Sidewalk
- | 329+40 to 335+70 8" FM
- | 348+40 to 354+22 8" FM
- | 8" Gate Valve
- | 8" Gate Valve
- | 4" FM Lateral South at 332+52.31
- | 4" FM Lateral South at 354+21.10
- | Restore 10 LF of Curb and Sidewalk
- | 6" FM lateral South at 335+69.31
- | 344+10 to 348+40 8" FM
- | 8" Gate Valve
- | 4" FM Lateral South at 345+25.14
- | 4" FM Lateral South at 347+01.10
- | 4" FM Lateral South at 348+37.10
- | Restore 10 LF of Curb and Sidewalk
- | 335+70 to 344+10 8" FM
- | 4" FM Lateral South at 336+63.30
- | 4" FM Lateral South at 340+20.29
- | 6" FM Lateral South at 344+04.00
- | 301+20 to 302+14.23 12" FM & 8 Reducer
- | ARV #7-1 (Night)
- | Pressure Test
- | Pressure Test
- | 306+92.21 ARV and MH3-1
- | 372+01 ARV and MH
- | 4" FM lateral South at 306+82.21
- | Pressure Test
- | Pressure Test
- | 6" FM lateral South at 308+29.22
- | Pressure Test
- | 300+10 12" FM Offset



Activity ID	Activity Name	Original Duration	Start	Finish	Activity % Complete	Oct-3-2023	Oct-4-2023	Oct-1-2023	Oct-2-2023	Oct-3-2023	Oct-4-2023	Oct-1-2024	Oct-2-2024	Oct-3-2024	Oct-4-2024
130	4" FM Lateral South at 314+19.20	2	01-Sep-23	05-Sep-23	0%										
189	Pressure Test	2	08-Sep-23	11-Sep-23	0%										
175	Pressure Test	2	18-Sep-23	19-Sep-23	0%										
102	Connect 8" FM lateral to Ex 8" FM at 302+26.72	1	26-Sep-23	26-Sep-23	0%										
116	Connect 4" FM to Ex 2" FM at 306+94.78	1	27-Sep-23	27-Sep-23	0%										
121	Connect 4" FM to Ex 4" FM at 311+04.72	1	28-Sep-23	28-Sep-23	0%										
136	Connect 4" FM to Ex 4" FM 320+03.63	1	04-Oct-23	04-Oct-23	0%										
142	Connect 4" FM to Ex 4" FM 324+63.65	1	05-Oct-23	05-Oct-23	0%										
162	Connect 4" FM to Ex 4" FM 332+48.87	1	12-Oct-23	12-Oct-23	0%										
170	Restore 10 LF of Curb and Sidewalk	1	13-Oct-23	13-Oct-23	0%										
193	Connect 4" FM to Ex 2" FM 355+72.57	1	18-Oct-23	18-Oct-23	0%										
214	Connect 4" FM to Ex 2" FM 376+88.70	1	23-Oct-23	23-Oct-23	0%										
150	Connect 4" FM to Ex 4" FM 327+58.58	1	24-Oct-23	24-Oct-23	0%										
237	Maintenance of Traffic	1	23-Aug-23	23-Aug-23	0%										
239	Removal of existing concrete	3	31-Aug-23	05-Sep-23	0%										

SAMPLE

- 4" FM Lateral South at 313+11.2
- 354+34 ARV and MH
- 8" FM lateral North at 300+63.1
- 4" FM Lateral South at 314+19.20
- Pressure Test
- 4" FM Lateral South at 355+12.10
- Pressure Test
- Pressure Test
- Pressure Test
- Pressure Test
- Pressure Test
- 336+01 ARV and MH
- Connect 8" FM lateral to Ex 8" FM at 300+53.9
- Connect 4" FM lateral to Ex FM at 301+17.48
- Connect 8" FM lateral to Ex 8" FM at 302+26.72
- 4" FM lateral North at 301+17.25
- 8" FM lateral South at 302+20.31
- Connect 4" FM lateral to Ex 4" FM at 306+82.78
- Connect 4" FM to Ex 2" FM at 306+94.78
- Connect 4" FM to Ex 4" FM at 311+04.72
- Connect 4" FM to Ex 4" FM 313+07.67
- Connect 4" FM to Ex 4" FM 314+26.68
- Connect 4" FM to Ex 4" FM 316+77.68
- Connect 4" FM to Ex 4" FM 320+03.63
- Connect 4" FM to Ex 4" FM 324+63.65
- Connect 6" FM to Ex 6" FM 325+42.63
- Connect 4" FM to Ex 4" FM 329+38.71
- Connect 4" FM to Ex 2" FM 329+35.73
- Connect 4" FM to Ex 4" FM 332+48.87
- Restore 10 LF of Curb and Sidewalk
- Restore 10 LF of Curb and Sidewalk
- Connect 4" FM to Ex 4" FM 348+37.62
- Connect 4" FM to Ex 4" FM 354+21.61
- Connect 4" FM to Ex 2" FM 355+72.57
- Restore 10 LF of Curb and Sidewalk
- Restore 10 LF of Curb and Sidewalk
- Connect 4" FM to Ex 2" FM 363+83.62
- Connect 4" FM to Ex 2" FM 376+88.70
- Connect 4" FM to Ex 4" FM 327+58.58
- Connect 8" FM to Ex 4" FM 387+03.71
- Connect 8" FM to Ex 6" FM 387+03.64
- Remove Maintenance of Traffic Devices
- 20-Sep-23, Phase 1BC1 (299+40 to 308+80)
- Maintenance of Traffic
- Clearing and grubbing
- Removal of existing concrete
- Traffic separator

█ Actual Level of Effort   
 █ Remaining Work   
 █ Critical Remaining Work   
 ◆ Milestone   
 ▼ summary





Activity ID	Activity Name	Original Duration	Start	Finish	Activity % Complete
247	Removal of MOT Devices	1	20-Sep-23	20-Sep-23	0%
<b>Widening</b>					
244	SP-12.5 1.5"	2	13-Sep-23	14-Sep-23	0%
<b>Phase 1BC2 (308+80 to 335+40)</b>					
263	SP-12.5 1.5"	2	15-Dec-23	18-Dec-23	0%
266	Sacrificial layer 1.5"	1	02-Jan-24	02-Jan-24	0%
<b>Landscape</b>					
<b>Widening</b>					
<b>Fcurb</b>					
261	Curb Base	3	07-Dec-23	11-Dec-23	0%
262	Pour	3	12-Dec-23	14-Dec-23	0%
<b>Phase 1BC3 (335+40 to 362+15)</b>					
271	Removal of existing concrete	5	28-Sep-23	04-Oct-23	0%
288	SP-12.5 1.5"	3	20-Dec-23	22-Dec-23	0%
290	Sodding	3	11-Jan-24	16-Jan-24	0%
291	Sacrificial layer 1.5"	2	17-Jan-24	18-Jan-24	0%
<b>Landscape</b>					
274	Relocate Landscape	6	12-Oct-23	19-Oct-23	0%
<b>Widening</b>					
278	Type B Stabilization	14	23-Oct-23	09-Nov-23	0%
<b>Drainage</b>					
S-20		1	27-Nov-23	27-Nov-23	



█ Actual Level of Effort   
 █ Remaining Work   
 ◆ Milestone  
█ Actual Work   
 █ Critical Remaining Work   
 ▼ summary



Activity ID	Activity Name	Original Duration	Start	Finish	Activity % Complete
<b>Fcurb</b>					
		16	28-Nov-23	19-Dec-23	
<b>Phase 1BC4 (362+15 to 388+70)</b>					
		75	03-Oct-23	24-Jan-24	
296	Removal of existing concrete	5	12-Oct-23	18-Oct-23	0%
308	SP-12.5 1.5"	3	05-Jan-24	09-Jan-24	0%
311	Sacrificial layer 1.5"	2	22-Jan-24	23-Jan-24	0%
312	Removal of MOT Devices	1	24-Jan-24	24-Jan-24	0%
<b>Landscape</b>					
		14	19-Oct-23	07-Nov-23	
300	Irrigation modifications	4	02-Nov-23	07-Nov-23	0%
<b>Widening</b>					
		21	08-Nov-23	11-Dec-23	
304	OBG 10	7	01-Dec-23	11-Dec-23	0%
<b>Fcurb</b>					
		16	12-Dec-23	04-Jan-24	
307	Pour	8	22-Dec-23	04-Jan-24	0%
<b>Phase 2A1 (299+40 to 308+80)(EB)</b>					
		28	21-Sep-23	31-Oct-23	
317	Abandone Sewer Force Main and Valves	2	27-Sep-23	28-Sep-23	0%
<b>Signalization</b>					
		15	27-Sep-23	18-Oct-23	
320	Conduit - Directional drill 494 LF	3	29-Sep-23	03-Oct-23	0%
322	Pullboxes	6	05-Oct-23	13-Oct-23	0%
324	Remove Existing PED Signal	1	18-Oct-23	18-Oct-23	0%
<b>Widening</b>					
		24	27-Sep-23	31-Oct-23	
338	Removal of MOT Devices	1	31-Oct-23	31-Oct-23	0%
<b>Lighting</b>					
		6	27-Sep-23	04-Oct-23	
329	Light Pole Complete 50' (1)	2	03-Oct-23	04-Oct-23	0%
<b>Fcurb</b>					
		5	19-Oct-23	25-Oct-23	



- Curb Base
  - Pour
- 24-Jan-24, Phase 1BC4 (362+15 to 388+70)
  - Maintenance of Traffic
    - Clearing and grubbing
    - Removal of existing concrete
      - SP-12.5 1.5"
      - Traffic separator
      - Sodding
        - Sacrificial layer 1.5"
        - Removal of MOT Devices
  - Removal of existing Landscape
  - Relocate Landscape
  - Irrigation modifications
    - 11-Dec-23, Widening
      - Regular Excavation
      - Type B Stabilization
      - OBG 10
  - 04-Jan-24, Fcurb
    - Curb Base
    - Pour
- Phase 2A1 (299+40 to 308+80)(EB)
  - Maintenance of Traffic
    - Clearing and grubbing
    - Abandone Sewer Force Main and Valves
  - PED Signals and Detectors
    - Conduit - Directional drill 494 LF
    - Conduit - Open Trench 141 LF
    - Pullboxes
      - Connections
    - Remove Existing PED Signal
      - Regular Excavation
      - Sidewalk
      - Removal of MOT Devices
  - Conduit - Open trench 34 LF
  - Light Pole Retrofit (4)
  - Pullboxes (2)
  - Conductors
  - Light Pole Complete 50' (1)
    - Curb Base
    - Pour
    - WUS #7 - FPU - Adjust



Activity ID	Activity Name	Original Duration	Start	Finish	Activity % Complete
340	Maintenance of Traffic	1	04-Jan-24	04-Jan-24	0%
344	Abandone Sewer Force Main and Valves	2	10-Jan-24	11-Jan-24	0%
351	Traffic Signal Cabinet	2	19-Oct-23	20-Oct-23	0%
349	Pipe boring	3	16-Jan-24	18-Jan-24	0%
350	Proposed Service Point Coordination and Connection	60	19-Oct-23	18-Jan-24	0%
353	Conductors	1	19-Jan-24	19-Jan-24	0%
348	Cure Time	20	16-Jan-24	13-Feb-24	0%
354	Upright and Erection of Steel Mast Mast 50'	5	22-Mar-24	28-Mar-24	0%
356	Conduit - 23 LF Open Trench	1	19-Jan-24	19-Jan-24	0%
<b>Lighting</b>					
361	Light Pole Complete (1)	2	25-Jan-24	26-Jan-24	0%
<b>S-04</b>					
367	Partial P top	1	12-Jan-24	12-Jan-24	0%
<b>S-05</b>					
369	Partial P-top	1	16-Jan-24	16-Jan-24	0%
371	Regular Excavation	1	10-Jan-24	10-Jan-24	0%
<b>Fcurb</b>					
378	SP-12.5 1.5"	1	01-Feb-24	02-Feb-24	0%
381	Maintenance of Traffic	1	05-Apr-24	08-Apr-24	0%
382	Pipe inspection, Cleaning and Prevideo For liner	2	08-Apr-24	10-Apr-24	0%
386	Abandone Sewer Force Main and Valves	2	11-Apr-24	15-Apr-24	0%



SAMPLE

█ Actual Level of Effort   
 █ Remaining Work   
 ◆ Milestone  
█ Actual Work   
 █ Critical Remaining Work   
 ▼ summary





Activity ID	Activity Name	Original Duration	Start	Finish	Activity % Complete	
<b>S-12</b>		2	11-Apr-24	15-Apr-24		
389	Partial P-top	1	12-Apr-24	15-Apr-24	0%	
<b>S-14</b>		2	11-Apr-24	15-Apr-24		
392	Partial P-top	1	12-Apr-24	15-Apr-24	0%	
<b>S-21</b>		2	15-Apr-24	17-Apr-24		
<b>Widening</b>		16	11-Apr-24	03-May-24		
399	Type B Stabilization	2	19-Apr-24	23-Apr-24	0%	
<b>Lighting</b>		6	11-Apr-24	19-Apr-24		
403	Pullboxes (2)	2	12-Apr-24	16-Apr-24	0%	
405	Light Pole Complete (1)	2	17-Apr-24	19-Apr-24	0%	
<b>Signalization</b>		4	12-Apr-24	18-Apr-24		
408	Pulboxes	2	15-Apr-24	17-Apr-24	0%	
<b>Fcurb</b>		5	25-Apr-24	02-May-24		
413	SP-12.5 1.5"	2	30-Apr-24	02-May-24	0%	
<b>Phase 2A4 (362+15 to 388+80)(EB)</b>		56	17-Jan-24	08-Apr-24		
417	Clearing and grubbing	3	26-Jan-24	30-Jan-24	0%	
420	WUS #5 #6 - FPU - Adjust	10	17-Jan-24	30-Jan-24	0%	
<b>Drainage</b>		12	02-Feb-24	21-Feb-24		
<b>S-24</b>		9	02-Feb-24	15-Feb-24		
<b>S-25</b>		3	16-Feb-24	21-Feb-24		
427	8 LF of 42"	1	20-Feb-24	20-Feb-24	0%	
<b>Widening</b>		32	22-Feb-24	08-Apr-24		
432	OBG 10	2	04-Mar-24	05-Mar-24	0%	
450	SP-12.5 1.5"	2	04-Apr-24	05-Apr-24	0%	
<b>Lighting</b>		7	22-Feb-24	01-Mar-24		

- ▼ [Redacted]
- | Pipe liner
- | Partial P-top
- ▼ [Redacted]
- | Pipe liner
- | Partial P-top
- ▼ [Redacted]
- | Partial Top
- | 8 LF of 18"
- ▼ [Redacted] Widening
- | Regular Excavation
- | Type B Stabilization
- | OBG 10
- | Removal of MOT Devices
- ▼ [Redacted] Lighting
- | Conduit - Open trench 27 LF
- | Pullboxes (2)
- | Conductors
- | Light Pole Complete (1)
- ▼ [Redacted] Signalization
- | Conduit - Open trench 29 LF
- | Pulboxes
- | PED Signals and Detectors
- ▼ [Redacted] Fcurb
- | Curb Base
- | Pour
- | SP-12.5 1.5"
- ▼ [Redacted] Phase 2A4 (362+15 to 388+80)
- | Maintenance of Traffic
- | Clearing and grubbing
- | WUS #5 - Comcast - Adjust/relocate vault
- | WUS #13 - #14, #15, #16, #17 - Adjust and Relocate
- | WUS #5 #6 - FPU - Adjust
- | Abandoned Sewer Force Main and Valves
- ▼ [Redacted] Drainage
- | [Redacted]
- | 342 LF of 42"
- ▼ [Redacted] S-25
- | 8 LF of 36"
- | 8 LF of 42"
- | 8 LF of 48"
- ▼ [Redacted] Widening
- | Regular Excavation
- | Type B Stabilization
- | OBG 10
- | Sidewalk
- | SP-12.5 1.5"
- | Removal of MOT Devices
- ▼ [Redacted] Lighting

SAMPLE

■ Actual Level of Effort   
 ■ Remaining Work   
 ■ Critical Remaining Work   
 ◆ Milestone   
 ▼ summary



Activity ID	Activity Name	Original Duration	Start	Finish	Activity % Complete	
435	Conduit - Open trench 48 LF	2	26-Feb-24	27-Feb-24	0%	
<b>Signalization</b>						
441	Traffic Control Cabinet	2	12-Mar-24	13-Mar-24	0%	
443	PED Signals and Detectors	2	18-Mar-24	19-Mar-24	0%	
<b>Fcurb</b>						
447	Curb Base	3	06-Mar-24	08-Mar-24	0%	
448	Pour	3	11-Mar-24	13-Mar-24	0%	
<b>Phase 2A5 (388+80 to 398+40)(EB)</b>						
455	WUS #18 #19 - Crown Castle - Adjust and Protect	10	25-Sep-23	06-Oct-23	0%	
<b>Widening</b>						
471	Sidewalk	1	23-Oct-23	23-Oct-23	0%	
472	SP-12.5 1.5"	1	24-Oct-23	24-Oct-23	0%	
473	Removal of MOT Devices	1	25-Oct-23	25-Oct-23	0%	
<b>Lighting</b>						
462	Light Pole Remove (2)	2	10-Oct-23	11-Oct-23	0%	
<b>Signalization</b>						
467	PED Signals and Detectors	2	19-Oct-23	20-Oct-23	0%	
<b>Fcurb</b>						
469	Curb Base	1	19-Oct-23	19-Oct-23	0%	
470	Pour	1	20-Oct-23	20-Oct-23	0%	
<b>Phase 2B1 (299+40 to 308+80)(WB)</b>						
478	WUS - #7 - #11 - AT&T Manhole Frame and cover	2	07-Nov-23	08-Nov-23	0%	
<b>Widening</b>						
<b>Signalization</b>						
485	PED Signals and Detectors	2	09-Nov-23	13-Nov-23	0%	

- Light Pole Complete (1)
- Conduit - Open trench 48 LF
- Pullboxes (2)
- Conductors
- 21-Mar-24, Signalization:
  - Conduit - Open Trench 150 LF
  - Conduit - Directional Bore 253 LF
  - Traffic Control Cabinet
  - Pullboxes
  - PED Signals and Detectors
  - Connect to existing traffic sign
  - Remove Existing PED Signal
- Curb Base
- Pour
- A5 (388+80 to 398+40)(EB)
  - Maintenance of Traffic
  - Clearing and grubbing
  - WUS #18 #19 - Crown Castle - Adjust and Protect
  - Abandon Sewer Force Main and Valves
  - Regular Excavation
  - Type B Stabilization
  - OBG 10
  - Sidewalk
  - SP-12.5 1.5"
  - Removal of MOT Devices
  - Light Pole Remove (2)
  - Conduit - Directional bore 220 LF
  - Conduit - Open trench 80 LF
  - Pullboxes
  - PED Signals and Detectors
  - Curb Base
  - Pour
- B1 (299+40 to 308+80)(WB)
  - Maintenance of Traffic
  - WUS - #3 - #4 - Crown Castle -
  - Clearing and grubbing
  - WUS - #7 - #11 - AT&T Manhole Frame and cover
  - Regular Excavation
  - Type B Stabilization
  - OBG 10
  - PED Signals and Detectors

█ Actual Level of Effort   
 █ Remaining Work   
 ◆ Milestone  
█ Actual Work   
 █ Critical Remaining Work   
 ▼ summary



Activity ID	Activity Name	Original Duration	Start	Finish	Activity % Complete
493	SP-12.5 1.5"	1	05-Dec-23	05-Dec-23	0%
<b>Phase 2B2 (308+80 to 335+40)(WB)</b>					
545	Removal of MOT Devices	1	04-Apr-24	05-Apr-24	0%
<b>Mast Arm 50'</b>					
503	Cure Time	20	21-Feb-24	20-Mar-24	0%
506	Upright and Erection of Steel Mast Mast 50'	4	22-Mar-24	27-Mar-24	0%
<b>Mast Arm 30'</b>					
510	Cure Time	20	23-Feb-24	22-Mar-24	0%
513	Upright and Erection of Steel Mast Mast 30'	4	22-Mar-24	28-Mar-24	0%
<b>Drainage</b>					
<b>S-8 to S-9</b>					
520	Partial P-top	1	20-Feb-24	21-Feb-24	0%
<b>S-01</b>					
522	Partial P-top	1	21-Feb-24	22-Feb-24	0%
<b>Widening</b>					
544	SP-12.5 1.5"	2	02-Apr-24	04-Apr-24	0%
<b>Lighting</b>					

- Conduit - Open Trench 28 LF
- Pullboxes
- Removal of Existing PED Signals
- Sidewalk
- SP-12.5 1.5"
- Removal of MOT Devices
- Curb Base
- Pour
- Maintenance of Traffic
- Clearing and grubbing
- WUS - #12 - #19 - AT&T Manhole frame and cover
- WUS #5-#6-#8 - Crown Castle
- Removal of MOT Devices
- Soft dig
- Drill and pour
- Pipe boring
- Conductors
- Cure Time
- Upright and Erection of Steel Mast Mast 50'
- Soft dig
- Drill and pour
- Pipe boring
- Conductors
- Cure Time
- Upright and Erection of Steel Mast Mast 30'
- Replace 15" with 18" pipe 32 LF
- Partial P-top
- Partial P-top
- Partial P-top
- Regular Excavation
- Type B Stabilization
- OBG:10
- Sidewalk
- SP-12.5 1.5"
- 21-Mar-24, Lighting
- Conduit - Open trench 39 LF
- Conduit - Directional Bore 856 LF
- Pullboxes (12)
- Light Pole Complete (4)

SAMPLE

█ Actual Level of Effort   
 █ Remaining Work   
 █ Critical Remaining Work   
 ◆ Milestone   
 ▼ summary



Activity ID	Activity Name	Original Duration	Start	Finish	Activity % Complete
<b>Signalization</b>					
537	Conduit - Directional Bore 326 LF	2	01-Mar-24	05-Mar-24	0%
536	Conduit - Open Trench 155 LF	4	01-Mar-24	07-Mar-24	0%
<b>FCurb</b>					
541	Curb Base	3	23-Feb-24	28-Feb-24	0%
542	Pour	3	28-Feb-24	04-Mar-24	0%
<b>Phase 2B3 (335+40 to 362+15)(WB)</b>					
550	WUS - #20 - #24 - AT&T Manhole frame and cover	2	06-May-24	08-May-24	0%
<b>Drainage</b>					
<b>S-06 to S-05</b>					
562	Pipe liner	1	10-May-24	13-May-24	0%
<b>Widening</b>					
566	OBG 10	2	17-May-24	21-May-24	0%
584	Sidewalk	5	03-Jun-24	10-Jun-24	0%
585	SP-12.5 1.5"	2	10-Jun-24	12-Jun-24	0%
586	Removal of MOT Devices	1	12-Jun-24	13-Jun-24	0%
576	Conduit - Open Trench 44 LF	1	09-May-24	10-May-24	0%
577	Conduit - Directional Bore 80 LF	3	13-May-24	16-May-24	0%
578	Pullboxes	4	16-May-24	23-May-24	0%

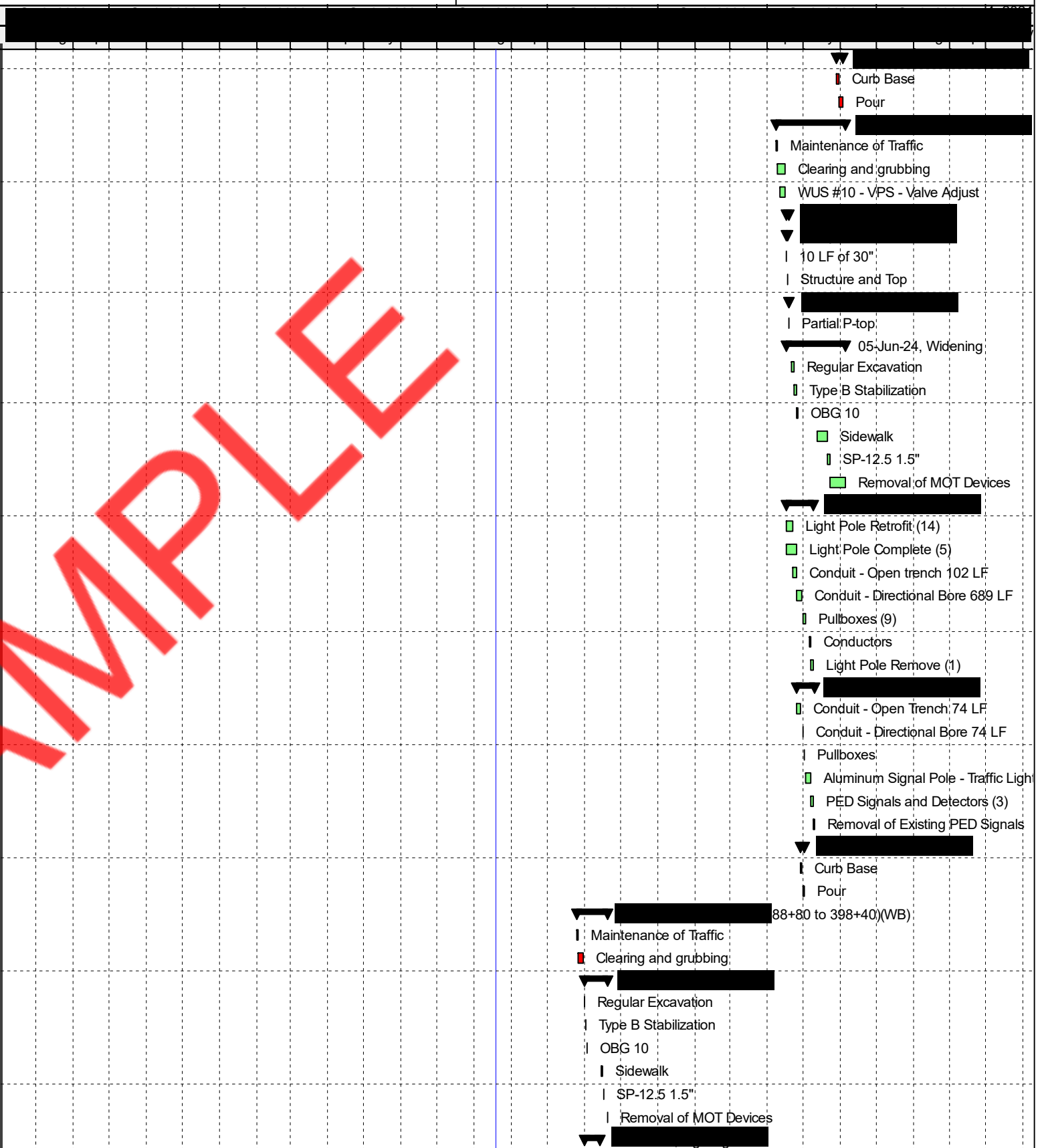
- Light Pole Retrofit (12)
- Conductors
- Light Pole Remove (3)
- ▼ [Redacted] Signalization
- Conduit - Directional Bore 326 LF
- Conduit - Open Trench 155 LF
- Pullboxes
- PED Signals and Detectors (5)
- ▼ [Redacted]
- Curb Base
- Pour
- ▼ [Redacted] 35
- Maintenance of Traffic
- Pipe inspection, cleaning and video
- Clearing and grubbing
- WUS - #20 - #24 - AT&T Manhole frame and cover
- ▼ [Redacted]
- ▼ [Redacted]
- Pipe liner
- ▼ [Redacted]
- Pipe liner
- ▼ [Redacted]
- Partial P-top
- ▼ [Redacted]
- Partial P-top
- ▼ [Redacted]
- Liner
- ▼ [Redacted]
- Pipe liner
- ▼ [Redacted]
- Regular Excavation
- Type B Stabilization
- OBG 10
- [Redacted]
- SP-12.5 1.5"
- Removal of MOT Devices
- ▼ [Redacted]
- Conduit - Open trench 36 LF
- ▼ [Redacted]
- Pullboxes (6)
- Light Pole Retrofit (16)
- Conductors
- Light Pole Remove (1)
- Light Pole Complete (3)
- ▼ [Redacted]
- Conduit - Open Trench 44 LF
- ▼ [Redacted]
- ▼ [Redacted]
- ▼ [Redacted]
- ▼ [Redacted]

SAMPLE



Activity ID	Activity Name	Original Duration	Start	Finish	Activity % Complete
606	Pullboxes (9)	3	01-May-24	03-May-24	0%
607	Conductors	2	06-May-24	07-May-24	0%
608	Light Pole Remove (1)	2	08-May-24	09-May-24	0%
<b>Signalization</b>		11	26-Apr-24	10-May-24	

SAMPLE



█ Actual Level of Effort   
 █ Remaining Work   
 ◆ Milestone  
█ Actual Work   
 █ Critical Remaining Work   
 ▾ summary

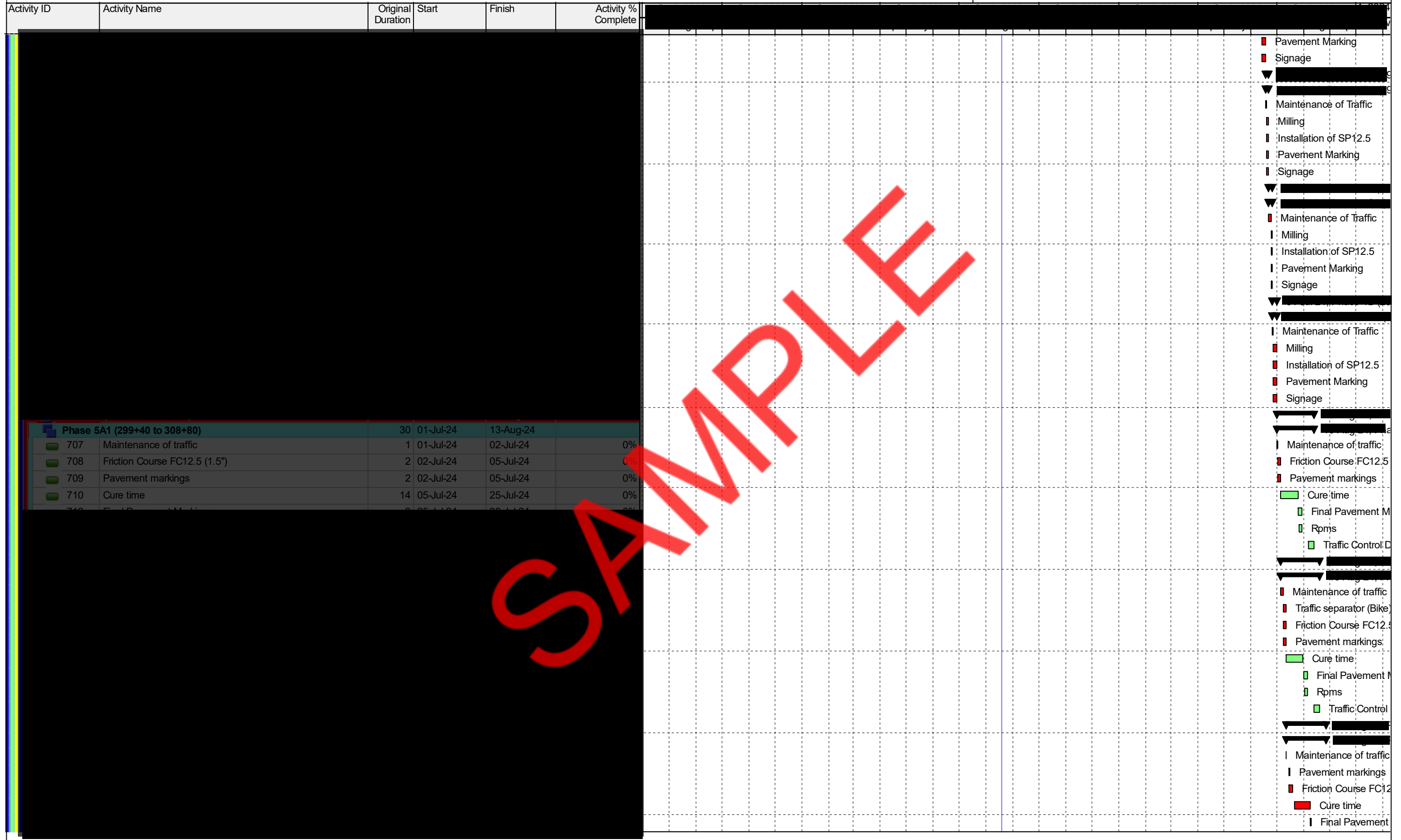




Activity ID	Activity Name	Original Duration	Start	Finish	Activity % Complete	
656	8" WM Sta 387+96.53 to 389+60.44	4	05-Sep-23	08-Sep-23	0%	<ul style="list-style-type: none"> <li>Light Pole Complete (1)</li> <li>Light Pole Retrofit (1)</li> <li>Conduit - Open trench 39 LF</li> <li>Pullboxes (2)</li> <li>Conductors</li> <li>Light Pole Remove (2)</li> <li>PEW signals and Detectors (4)</li> <li>Conduit - Open Trench 66 LF</li> <li>Conduit - Directional Bore 246 LF</li> <li>Pullboxes</li> <li>Removal of Existing PED Signals</li> <li>Curb Base</li> <li>Pour</li> <li>80 to 398+40)(EB)</li> <li>88+80 to 398+40)(EB)</li> <li>Maintenance of Traffic</li> <li>Clearing and grubbing</li> <li>8" WM Sta 387+98.56 to 387+96.29</li> <li>Offset 387+96.29 Under 24" Storm</li> <li>8" WM Sta 387+96.53 to 389+23.54</li> <li>8" WM Sta 387+96.53 to 389+60.44</li> <li>6" x 6" tapping Tee to existing 6" WM</li> <li>Commissioning of WM</li> <li>Flowable Fill</li> <li>Trench restoration</li> <li>Removal of existing Landscape</li> <li>Relocate Landscape</li> <li>Irrigation modifications</li> <li>Regular Excavation</li> <li>Type B Stabilization</li> <li>OBG 10</li> <li>SP-12.5 1.5'</li> <li>Traffic separator</li> <li>Sodding</li> <li>Sacrificial layer 1.5"</li> <li>Removal of MOT Devices</li> <li>Curb Base</li> <li>Pour</li> <li>Maintenance of Traffic</li> <li>Milling</li> <li>Installation of SP12.5</li> </ul>
657	6" x 6" tapping Tee to existing 6" WM	2	11-Sep-23	12-Sep-23	0%	
658	Commissioning of WM	10	13-Sep-23	26-Sep-23	0%	
659	Flowable Fill	1	27-Sep-23	27-Sep-23	0%	

SAMPLE

█ Actual Level of Effort   
 █ Remaining Work   
 ◆ Milestone  
█ Actual Work   
 █ Critical Remaining Work   
 ▾ summary



SAMPLE

■ Actual Level of Effort   
 ■ Remaining Work   
 ◆ ◆ Milestone  
■ Actual Work   
 ■ Critical Remaining Work   
 ▼ summary



Activity ID	Activity Name	Original Duration	Start	Finish	Activity % Complete	[Redacted]																											
732	Rpms	2	08-Aug-24	09-Aug-24	0%	[Redacted]																											
730	Traffic Control Detector - Loop Assembly	5	21-Aug-24	27-Aug-24	0%	[Redacted]																											
<b>Phase 6B1 (299+40 to 308+80)</b>						[Redacted]																											
735	Maintenance of traffic	1	12-Aug-24	12-Aug-24	0%	[Redacted]																											
736	Traffic separator (Bike)	2	13-Aug-24	14-Aug-24	0%	[Redacted]																											
737	Friction Course FC12.5 (1.5")	3	13-Aug-24	15-Aug-24	0%	[Redacted]																											
738	Pavement markings	5	13-Aug-24	19-Aug-24	0%	[Redacted]																											
740	Traffic Control Detector - Loop Assembly	5	16-Aug-24	22-Aug-24	0%	[Redacted]																											
739	Cure time	14	16-Aug-24	04-Sep-24	0%	[Redacted]																											
741	Final Pavement Markings	3	05-Sep-24	09-Sep-24	0%	[Redacted]																											
742	Rpms	2	06-Sep-24	09-Sep-24	0%	[Redacted]																											
744	Punch list and closeout	7	10-Sep-24	18-Sep-24	0%	[Redacted]																											

SAMPLE